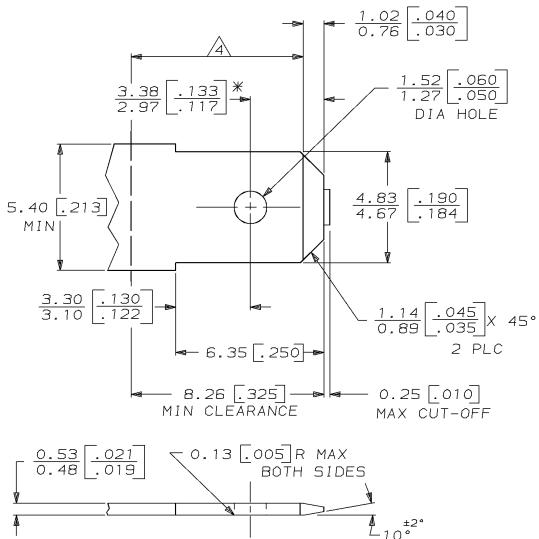


DRAWING MADE IN THIRD ANGLE PROJECTION

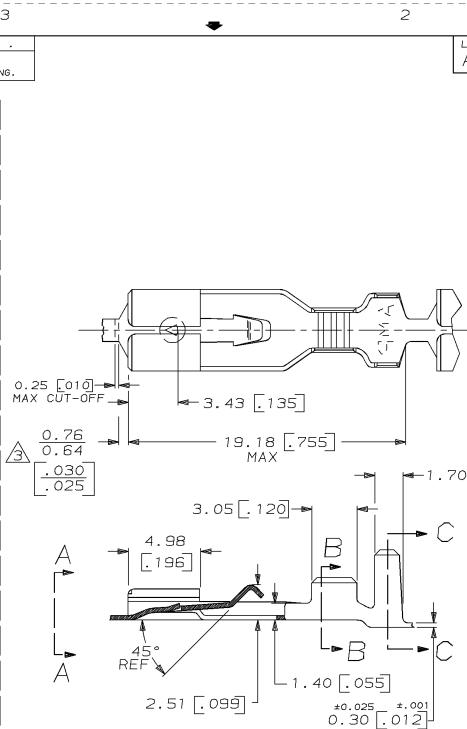
THIS DRAWING IS UNPUBLISHED. RELEASED FOR PUBLICATION
 © COPYRIGHT 19 BY AMP INCORPORATED, HARRISBURG, PA. ALL INTERNATIONAL RIGHTS RESERVED. AMP PRODUCTS MAY BE COVERED BY U.S. AND FOREIGN PATENTS AND/OR PATENTS PENDING.

LOC	DIST	P	F	ZONE	LTR	DESCRIPTION	DATE	APPROVED
AF	50					M	REV PER 0710-0011-96	4/25/96 JR/JG

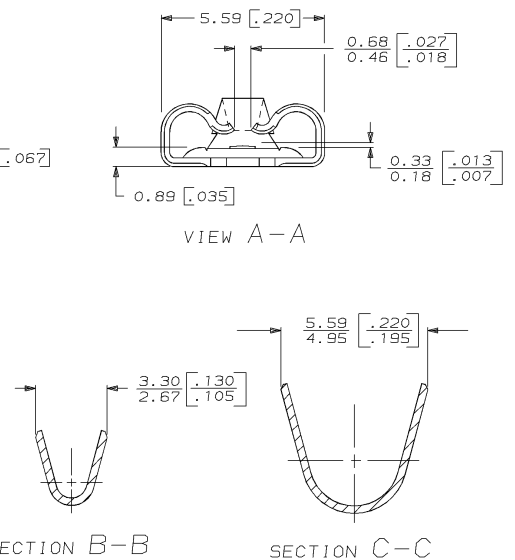
SUGGESTED MATING TAB



- MATL: #2 HARD BRASS OR NICKEL PLATE STEEL.
 - NO BURRS PERMISSIBLE AT HOLE.
 - TIN PLATING IS REQUIRED ON BRASS WHEN TERMINAL TEMPERATURE IS OVER 225°F.
 - MUST BE FLAT WITHIN 0.076 [003] OVER THIS LENGTH.
 - HOLE MUST BE SYMMETRICAL ABOUT TAB ϕ WITHIN 0.076 [003].
- * TO BE USED ONLY WHEN SHOULDER IS ELIMINATED.



1 DIMENSIONS IN BRACKETS ARE IN INCHES.
 2 CONTINUOUS STRIP ON REELS.
 ⚠ THE 0.76 [030] [0.64 [025]] DIMENSION MUST BE MAINTAINED BY THE APPLICATOR CUT-OFF TO ENSURE THE PROPER LOCKING FUNCTION OF THE RECEPTACLE.



METRIC

2.29 - 3.30 [.090 - .130]	0.5 - 1.4mm ² [20-16]	63232-1
INSULATION RANGED		WIRE SIZE
PART NO		
UNLESS OTHERWISE SPECIFIED DIMENSIONS ARE IN MM TOLERANCES ON: 2 PL DEC ± - 3 PL DEC ± 0.25 [010] ANGLES ± -	DR 2/28/87 JR RUTH CHK 3/9/87 G YETTER APPD 3/9/87 J GILLESPIE	AMP INCORPORATED Harrisburg, Pa. 17105
MATERIAL #6H BRASS	APPD 3/9/87 R KUZO PRODUCT SPEC -	NAME RECEPTACLE, POSITIVE LOCK, .187 SERIES
FINISH PRE-TIN	APPLICATION SPEC - WEIGHT -	SIZE C FSCM NO 00779 DRAWING NO 63232
		SCALE NTS SHEET 1 OF 1

AMP 1471-7 REV 10-84

CUSTOMER DRAWING