

4

3

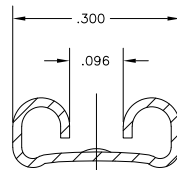
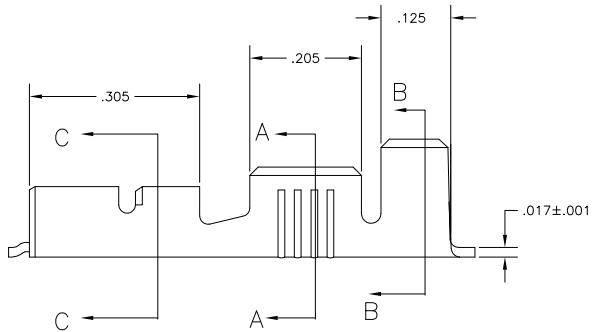
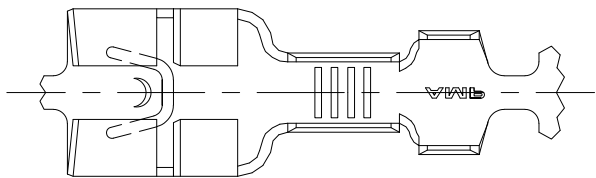
2

1

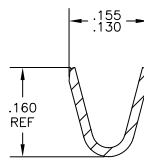
THIS DRAWING IS UNPUBLISHED. RELEASED FOR PUBLICATION
 © COPYRIGHT BY TYCO ELECTRONICS CORPORATION. ALL RIGHTS RESERVED.

LOC	DIST	REVISIONS			
P	LTR	DESCRIPTION	DATE	BY	APPD
D		REL PER 063A-0166-05	02MAR05	JR	PD
D1		REVISED PER ECO-10-000443	18JAN10	KK	HMR

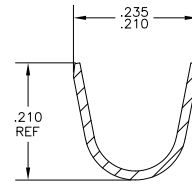
- CONTINUOUS STRIP ON REELS
 - ACCEPTS #18-#14 AWG WIRE SIZE
CRIMP WIDTH, .120, F TYPE
 - INSULATION RANGE IS .120-.170 DIA
CRIMP WIDTH, .180, F OR O TYPE
 - MATING TAB THK IS .032±.001.
- ⚠️ OBSOLETE PARTS: OBSOLETE CIS STREAMLINING
PER D.RENAUD/D.SINISI



SECTION C-C



SECTION A-A



SECTION B-B

⚠️ OBSOLETE	-	1217917-2
	.000080 MIN TIN	1217917-1
	FINISH	PART NO

THIS DRAWING IS A CONTROLLED DOCUMENT.		DRN: JR_RUTH 22JAN03	Tyco Electronics Corporation Harrisburg, Pa 17105-3608	
DIMENSIONS: INCHES		CHK: DESANTIS 11NOV03	RECEPTACLE, FASTON, .250 SERIES	
TOLERANCES UNLESS OTHERWISE SPECIFIED:		APPD: DESANTIS 22JAN03	SIZE: A2 00779 C=1217917	
0 PLC ± .005	1 PLC ± .004	PRODUCT SPEC: -	APPLICATION SPEC: -	RESTRICTED TO: -
2 PLC ± .003	3 PLC ± .010	WEIGHT: -	CAGE CODE: -	SCALE: 1:1
4 PLC ± .005	ANGLES ± .5°	FINISH: SEE TABLE	CUSTOMER DRAWING	SHEET 1 OF 1 REV D1

AMP 1471-9 REV 31MM2000

1217917

A