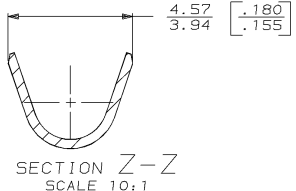
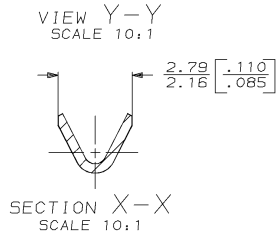
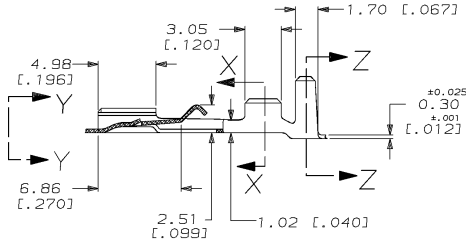
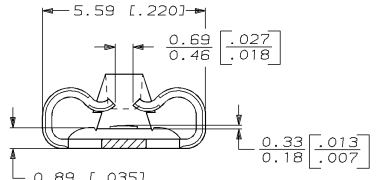
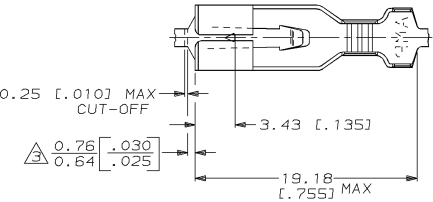
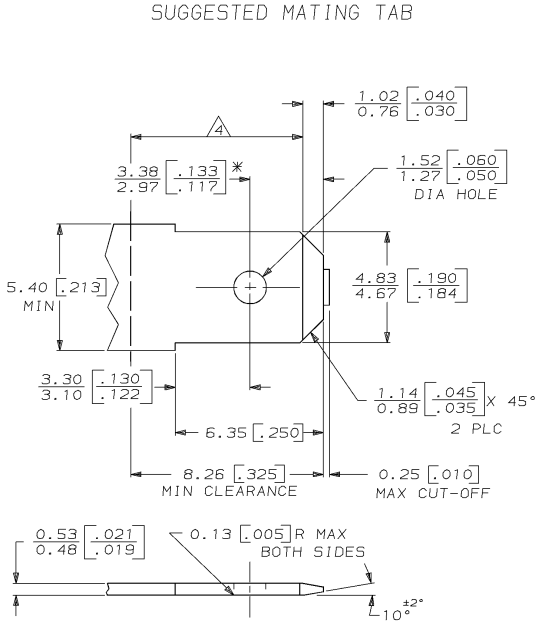


DRAWING MADE IN THIRD ANGLE PROJECTION  
 THIS DRAWING IS UNPUBLISHED. RELEASED FOR PUBLICATION, 19  
 © COPYRIGHT 19 BY AMP INCORPORATED. ALL INTERNATIONAL RIGHTS RESERVED.

LOC	DIST	P	F	ZONE	LTR	DESCRIPTION	DATE	APPD
AF	50				M	0B5 -1 PER 0L10-0056-96	8/26/96	JR/JG

- 1 NOT FOR USE IN AMP HOUSINGS.  
 2 CONTINUOUS STRIP ON REELS.  
 3 THE 0.76 [.030] DIMENSION MUST BE MAINTAINED BY THE APPLICATOR CUT-OFF TO ENSURE THE PROPER LOCKING FUNCTION OF THE RECEPTACLE.



- 1 MATL: #2 HARD BRASS OR NICKEL PLATE STEEL.  
 2 NO BURRS PERMISSIBLE AT HOLE.  
 3 TIN PLATING IS REQUIRED ON BRASS WHEN TERMINAL TEMPERATURE IS OVER 225°F.  
 4 MUST BE FLAT WITHIN 0.076 [.003] OVER THIS LENGTH.  
 5 HOLE MUST BE SYMMETRICAL ABOUT TAB  $\phi$  WITHIN 0.076 [.003].  
 \* TO BE USED ONLY WHEN SHOULDER IS ELIMINATED.

OBSOLETE	PRE-TIN	1.52-2.79 [.060-.110] DIA	0.2-0.5mm <sup>2</sup> [24-20] AWG	63407-2
	TIN 0.002032 [.000080] MIN			63407-1
	FINISH	INSULATION RANGE	WIRE SIZE	PART NO
	DO NOT SCALE PRINT. UNLESS SPECIFIED DIMENSIONS IN mm [INCHES] TOLERANCES ON: 2 PLC DEC ± 0.25 [.010] 3 PLC DEC ± - ANGLES ± -	DR 1/24/91 JR RUTH CHK 1/24/91 MS FEHER APPD 1/24/91 J GILLESPIE	AMP Incorporated Harrisburg, PA 17105-3608	RECEPTACLE, POSITIVE-LOCK, 4.75 [.187] SERIES
	MATERIAL	PRODUCT SPEC		
	#6H BRASS	APPLICATION SPEC	SIZE CAGE CODE DRAWING NO	
	FINISH		00779 63407	
	SEE TABLE	WEIGHT	SCALE 4:1	SHEET 1 OF 1

METRIC

CUSTOMER DRAWING