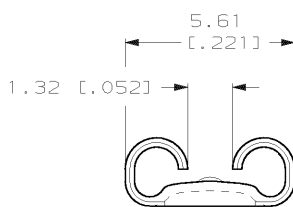
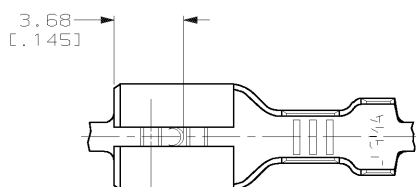


DRAWING MADE IN THIRD ANGLE PROJECTION

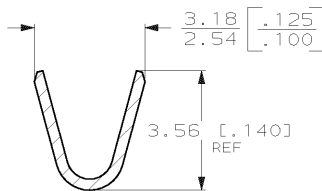
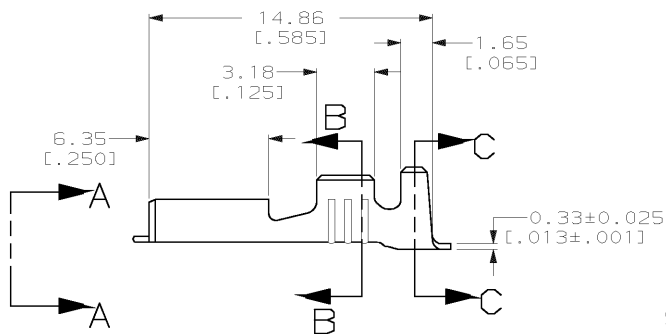
THIS DRAWING IS UNPUBLISHED. RELEASED FOR PUBLICATION, 19
 © COPYRIGHT 19 BY AMP INCORPORATED. ALL INTERNATIONAL RIGHTS RESERVED.

LOC	DIST	REVISIONS			
AF	50	ZONE	LTR	DESCRIPTION	DATE
		D		REV PER 063A-0266-00	27APR00
					JR/PD

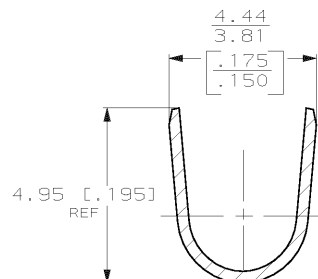
- 1 ACCEPTS WIRE SIZE [#20-#16] AWG.
- 2 INSULATION RANGE IS 2.29-3.30 [.090-.130] DIA.
- 3 CONTINUOUS STRIP ON REELS.



VIEW A-A
SCALE 8:1



SECTION B-B
SCALE 8:1



SECTION C-C
SCALE 8:1

F OR O	3.56 [.140]	4.78 [.188]	F	2.29 [.090]	1.52 [.060]	1.3mm [.16]
					1.35 [.053]	0.8mm [.18]
					1.24 [.049]	0.5mm [.20]
TYPE	WIDTH	STRIP LENGTH ±0.38 ±[.015]	TYPE	WIDTH	HEIGHT	WIRE
INSUL BARREL CRIMP			WIRE BARREL CRIMP			

OBsolete

0.002032 [.000080] MIN TIN	0.51±0.025 [.020±.001]	63556-2 63556-1
FINISH	MATING TAB THICKNESS	PART NO
DO NOT SCALE PRINT. UNLESS SPECIFIED DIMENSIONS IN MM (INCHES) TOLERANCES ON: 2 PLC DEC ± 0.25 (.010) 3 PLC DEC ± - ANGLES ± -	DR 11/8/89 JR RUTH CHK 11/8/89 MS FEHER APPD 11/8/89 C MEERS APPD 11/8/89 R KUZO	AMP Incorporated Harrisburg, PA 17105-3608
MATERIAL H04 BRASS	PRODUCT SPEC -	NAME RECEPTACLE, LIF, FASTON, 4.75 [.187] SERIES
FINISH SEE TABLE	APPLICATION SPEC -	SIZE B
	WEIGHT -	CAGE CODE 00779
		DRAWING NO C=63556
		SCALE 5:1
		SHEET 1 OF 1

THIS DRAWING IS A CONTROLLED DOCUMENT FOR AMP INCORPORATED. IT IS SUBJECT TO CHANGE AND THE CONTROLLING ENGINEERING ORGANIZATION SHOULD BE CONTACTED FOR THE LATEST REVISION.