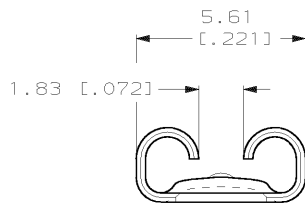
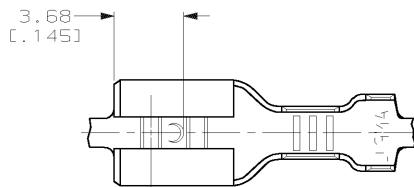


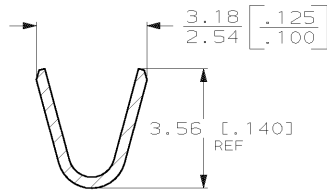
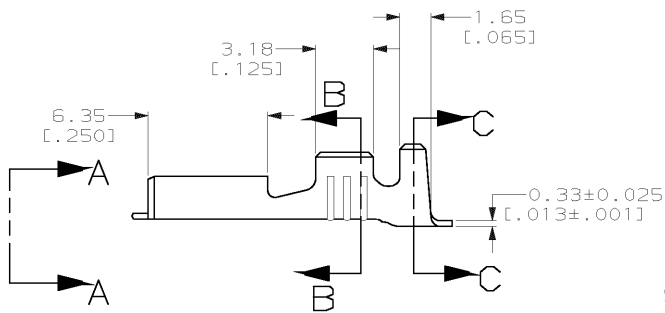
THIS DRAWING IS UNPUBLISHED. RELEASED FOR PUBLICATION, 19
 © COPYRIGHT 19 BY AMP INCORPORATED. ALL INTERNATIONAL RIGHTS RESERVED.

LOC	DIST	REVISIONS					
P	F	ZONE	LTR	DESCRIPTION	DATE	APPD	
AF	50			D	REV PER 063A-0266-00	27APR00	JR/PD

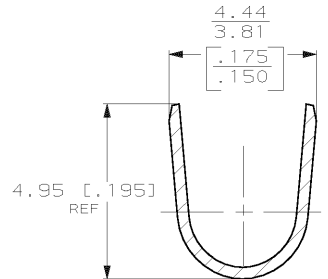


- 1 ACCEPTS WIRE SIZE [#20-#16] AWG.
- 2 INSULATION RANGE IS 2.29-3.30 [.090-.130] DIA.
- 3 CONTINUOUS STRIP ON REELS.

VIEW A-A
SCALE 8:1



SECTION B-B
SCALE 8:1



SECTION C-C
SCALE 8:1

OBSOLETE	0.002032 [.000080] MIN TIN	0.81±0.025 [.032±.001]	63608-2
	FINISH	MATING TAB THICKNESS	63608-1 PART NO
DO NOT SCALE PRINT. UNLESS SPECIFIED DIMENSIONS IN MM (INCHES) TOLERANCES ON: 2 PLC DEC ± 0.25 (.010) 3 PLC DEC ± - ANGLES ± -		DR 3/4/91 JR RUTH CHK 3/4/91 MS FEHER APPD 3/4/91 R SEAWER APPD 3/4/91 R REINER	AMP AMP Incorporated Harrisburg, PA 17105-3608
MATERIAL H04 BRASS		PRODUCT SPEC -	NAME RECEPTACLE, LIF, FASTON, 4.75 [.187] SERIES
FINISH SEE TABLE		APPLICATION SPEC -	SIZE B
THIS DRAWING IS A CONTROLLED DOCUMENT FOR AMP INCORPORATED. IT IS SUBJECT TO CHANGE AND THE CONTROLLING ENGINEERING ORGANIZATION SHOULD BE CONTACTED FOR THE LATEST REVISION.		WEIGHT -	CAGE CODE 00779
		SCALE 5:1	DRAWING NO C=63608
			SHEET 1 OF 1