

4

3

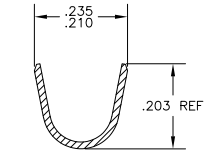
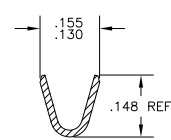
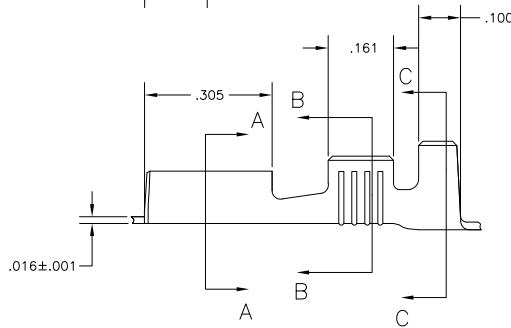
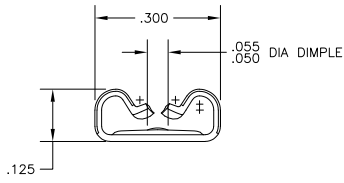
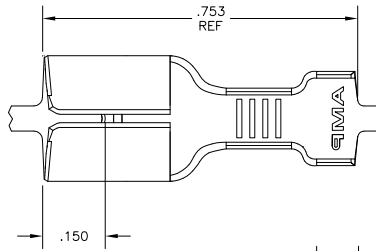
2

1

THIS DRAWING IS UNPUBLISHED. RELEASED FOR PUBLICATION
 © COPYRIGHT - By - ALL RIGHTS RESERVED.

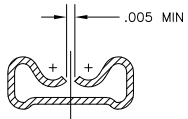
| LOC | | DIBT | | REVISIONS | | | |
|-----|-----|-----------------------|---------|-----------|------|--|--|
| P | LTR | DESCRIPTION | DATE | BY | APPD | | |
| C | | REV PER EDR 11-001883 | 06APR11 | JR | PD | | |

- 1 CONTINUOUS STRIP ON REELS
- 2 WIRE SIZE IS #18-#14 AWG
- 3 INSULATION RANGE IS .120-.170 DIA
- 4 MATING TAB THK IS .032±.001



SECTION B-B

SECTION C-C



SECTION A-A

1742198-1
 PART NO

| | | | | |
|--|--|------------------|-----------|--|
| THIS DRAWING IS A CONTROLLED DOCUMENT. | | DRN | 220C104 | TE Connectivity |
| DIMENSIONS: INCHES | | CHK | 220C104 | |
| OTHER DIMENSIONS: MILLIMETERS | | DESIGNER | ED HOWARD | RECEPTACLE, FASTON, STEEL, .250 SERIES |
| MATERIAL: H02 STEEL | | APPD | 220C104 | |
| FINISH: .000150 MIN NICKEL | | PRODUCT SPEC | | RESTRICTED TO: - |
| | | APPLICATION SPEC | | SIZE: A2 |
| | | WEIGHT | | CAGE CODE: 00779 |
| | | CUSTOMER DRAWING | | DRAWING NO: 1742198 |
| | | | | SCALE: 6:1 |
| | | | | SHEET: 1 of 1 |
| | | | | REV: C |

1742198

A