

4

3

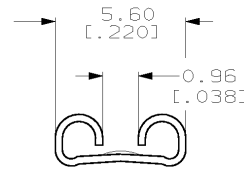
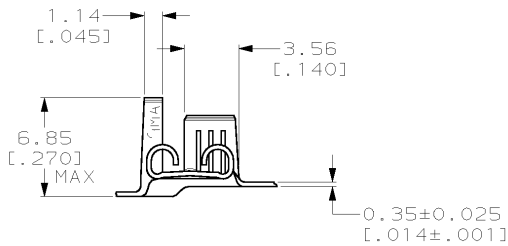
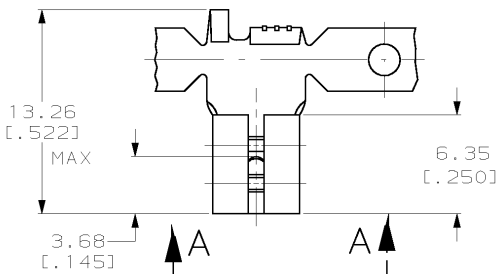
2

1

THIS DRAWING IS UNPUBLISHED. RELEASED FOR PUBLICATION .19
 © COPYRIGHT 19 BY AMP INCORPORATED. ALL RIGHTS RESERVED.

| LOC | DIST | REVISIONS | | | |
|-----|------|----------------------|---------|-----|------|
| P | LTR | DESCRIPTION | DATE | DWN | APVD |
| E | | REV PER 063A-0113-02 | 01MAR02 | JR | PD |

- 1 CONTINUOUS STRIP ON REELS.
- 2 FEED IS 16.51 ± 0.076 [.650 ± .005].
- 3 ACCEPTS WIRE SIZE [#20-#16] AWG.
- 4 INSULATION RANGE TO BE 2.29-3.30 [.090-.130] DIA.
- 5 MATING TAB THK TO BE 0.406 ± 0.025 [.020 ± .001].



VIEW A-A
SCALE 6:1

| | |
|----------------------------|-----------|
| 0.002032 [.000080] MIN TIN | 1217009-2 |
| - | 1217009-1 |
| FINISH | PART NO. |

| | | | | | |
|---|--------------|------------------|-------------|---|--|
| THIS DRAWING IS A CONTROLLED DOCUMENT FOR AMP INCORPORATED. IT IS SUBJECT TO CHANGE AND THE CONTROLLING ENGINEERING ORGANIZATION SHOULD BE CONTACTED FOR THE LATEST REVISION. | | DWN | JR RUTH | 8/22/97 | AMP AMP Incorporated Harrisburg, PA 17105-3608 |
| DIMENSIONS: MM (INCHES) | | CHK | MS FEHER | 8/22/97 | |
| TOLERANCES UNLESS OTHERWISE SPECIFIED: | | APVD | P. DESANTIS | 8/22/97 | NAME |
| 0 PLC | ± | PRODUCT SPEC | | RECEPTACLE, FASTON, FLAG, 4.75 [.187] SERIES | |
| 1 PLC | ± | APPLICATION SPEC | | SIZE | CAGE CODE |
| 2 PLC | ±0.25 (.010) | WEIGHT | | A3 | 00779 |
| 3 PLC | ± | CUSTOMER DRAWING | | DRAWING NO | |
| 4 PLC | ± | | | SCALE 4:1 SHEET 1 OF 1 REV E | |
| ANGLES | ± | | | | |
| MATERIAL | H04 BRASS | FINISH | | SEE TABLE | |

AMP 1470-19 REV 09MAY94

16-OCT-00 12:25:11 amp13469 /home/amp13469/edmod