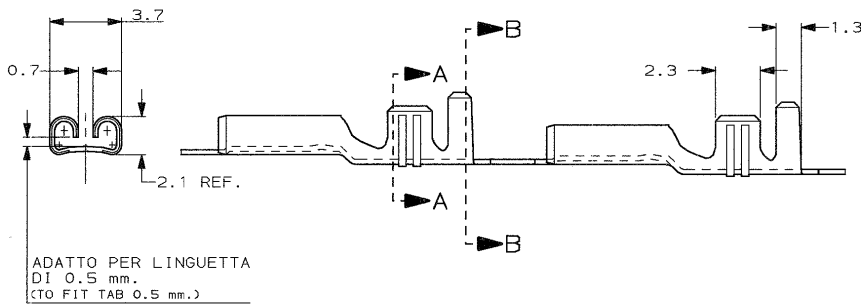
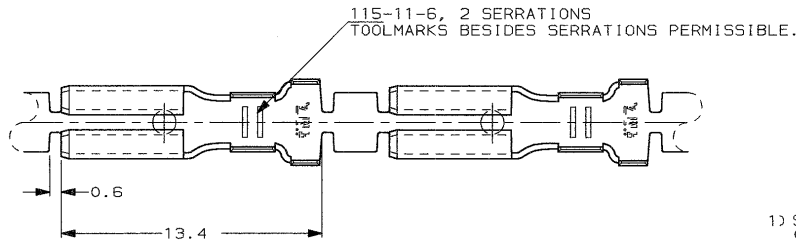


SCALA NON IMPENIATIVA
(DO NOT SCALE)
DIMENSIONI IN
DIMENSIONS IN mm

METRIC

THIRD ANGLE
PROJECTION



1) STATO DI FORNITURA - SCALA 1:1
(SUPPLY CONDITION - SCALE 1:1)

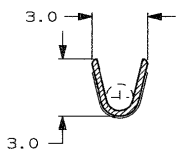


SENDO DI USCITA
DEL TERMINALE
DALLA BOBINA
(DIRECTION OFF
TOP OF REEL)

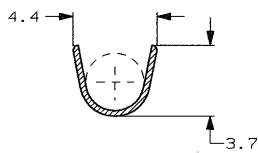
2) SPECIFICA DI PRODOTTO 108-20019
(PRODUCT SPEC. 108-20019)

3) PER LE VERSIONI IN PEZZI SCIOLTI
VEDERE DISEGNO 180441
(FOR LOOSE PIECE VERSION SEE DRAWING 180441)

SEZIONE A-A
(SECTION A-A)



SEZIONE B-B
(SECTION B-B)



	PRE-STAGNATO (PRE-TIN PLATED)	OTTONE (BRASS)	180437-2	AG
	NUDO (UNPLATED)	OTTONE (BRASS)	180437-1	AE
NOTE	FINITURA / COLORE (FINISH / COLOUR)	MATERIALE (MATERIAL)	NUMERO (AMP P/N)	REV.
CUSTOMER DWG. FOR REFERENCE ONLY		DISEGNO PER CLIENTE SOLO PER RIFERIMENTO		
THIS DRAWING IS UNPUBLISHED		RELEASE FOR PUBLICATION		
© COPYRIGHT IS BY AMP INCORPORATED, HARRISBURG, PA. ALL INTERNATIONAL RIGHT RESERVED. AMP PRODUCTS MAY BE COVERED BY U.S. AND FOREIGN PATENT AND/OR PATENT PENDING				
TOLLERANZE, SE NON DIVERSAMENTE SPECIFICATO (TOLERANCES, UNLESS OTHERWISE SPECIFIED)		DIAM. ISOLANTE (INS. DIA. RANGE)	RANGO FILO (WIRE RANGE)	SCALA (SCALE)
± 0.4		1.5-2.8	0.5-1.5	5:1
ANGOLI (ANGLES)		AMP ITALIA S.p.A. CORPO F.LLI GERVASI, 15 COLLEGNO (TORINO)		
DTS. H. YAALI (DR.)		DESCRIZIONE (DESCRIPTION)		
18 DEC 2000		FASTON® Connector .110" sr. REC. CONTACT		
AG	REVISED ECR05-8370	AV	CONT. C. TARTARI	LOC. SIZE NUMERO (CMB NO)
AE	REVISED & REDRAWN ET09-0004-01	H. Y.	APP.	REV. FOR LO (SHEET)
REV.	REVISIONI (REVISION RECORD)	DIS. DATA (CODE)	APP.	D1 (OF)
				1 OF 1

DISTRIBUZIONE
DURANTE
L'ESPOSIZIONE