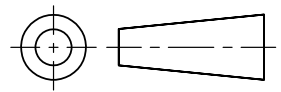


DO NOT SCALE

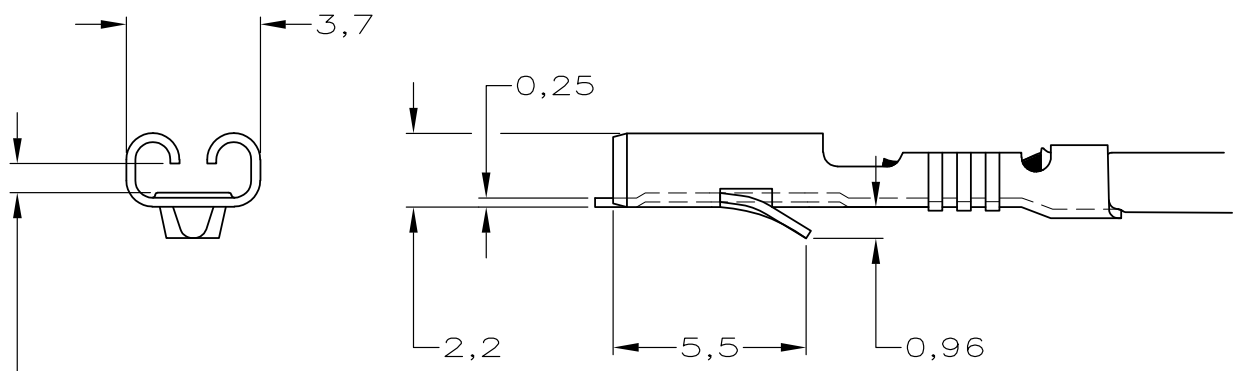
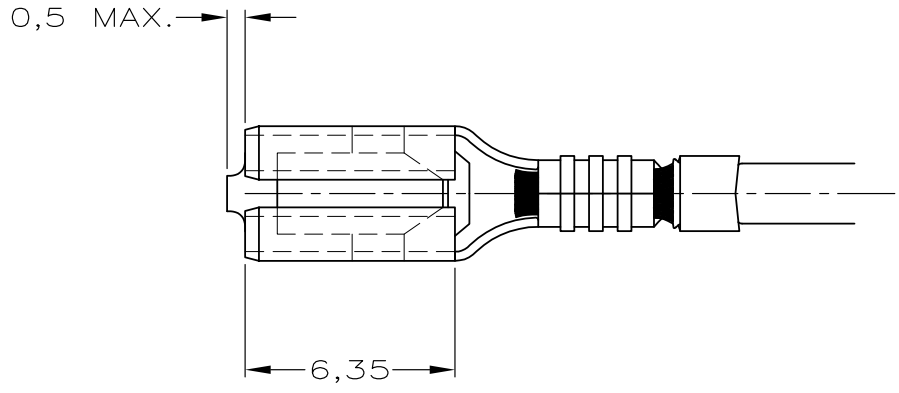
DIMENSIONS IN mm

METRIC

THIRD ANGLE
PROJECTION



WIRE RANGE :
0,3-0,6 mm² 22-20AWG
INSULATION RANGE :
1,3-2,0 DIA .050-.080 DIA



FOR 0,8 TAB-THK.

NOTE:

⚠ OBSOLETE PARTS: OBSOLETE CIS STREAMLINING PER D.RENAUD/D.SINISI

| FINISH | MATERIAL | | PARTNUMBER |
|--------------|------------|---|------------|
| TINPLATED | PH. BRONZE | | 160173-7 |
| UNPLATED | PH. BRONZE | | 160173-6 |
| GOLDPLATED | BRASS | ⚠ | 160173-5 |
| NICKELPLATED | BRASS | | 160173-4 |
| SILVERPLATED | BRASS | ⚠ | 160173-3 |
| TINPLATED | BRASS | | 160173-2 |
| UNPLATED | BRASS | | 160173-1 |

| | | | | | | | | |
|-------|-----------------|-------|-----------|-----------|------------------------------------|-----------|---|--------|
| - | | | | | CUSTOMER DRAWING | | FOR REFERENCE ONLY WILL NOT BE UPDATED | |
| - | | | | | © | | BY AMP HOLLAND B.V. | |
| - | | | | | ALL INTERNATIONAL RIGHTS RESERVED. | | AMP PRODUCTS MAY BE COVERED BY U.S. AND FOREIGN AND/OR PATENTS PENDING. | |
| - | | | | | THIS DRAWING IS UNPUBLISHED | | RELEASED FOR PUBLICATION _____, 19____ | |
| - | | | | | | | AMP HOLLAND B.V. 's-Hertogenbosch, The Netherlands. | |
| D1 | ECO-10-000443 | KK | HMR | 18JAN10 | | | | |
| D | EH-0065-95 | DK | PB | 18 JAN 95 | | | | |
| LTR. | REVISION RECORD | | DR. | CHK. | DATE | | | |
| DR.: | D.KESSLER | CHK.: | P.BEIJNON | APP.: | L.v.SOEST | DWG.No. | REV.LTR. | SHEET |
| DATE: | 18 JAN 95 | DATE: | - | DATE: | - | C- 160173 | D1 | 1 OF 1 |
| | | | | | | | | A4 |