

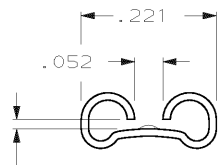
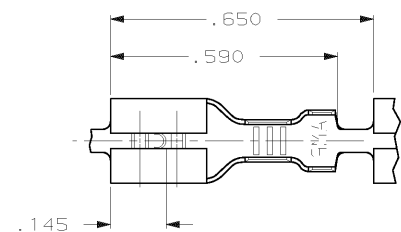
DRAWING MADE IN THIRD ANGLE PROJECTION

THIS DRAWING IS UNPUBLISHED. RELEASED FOR PUBLICATION
 © COPYRIGHT 1965 BY AMP INCORPORATED, HARRISBURG, PA. ALL INTERNATIONAL RIGHTS RESERVED. AMP PRODUCTS MAY BE COVERED BY U.S. AND FOREIGN PATENTS AND/OR PATENTS PENDING.

LOC	DIST	P	F	ZONE	LTR	DESCRIPTION	DATE	APPROVED
AF	50				AC	OBS -3 PER OL10-0265-97	6/18/97	JR/JG

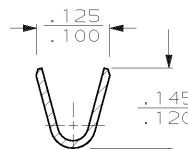
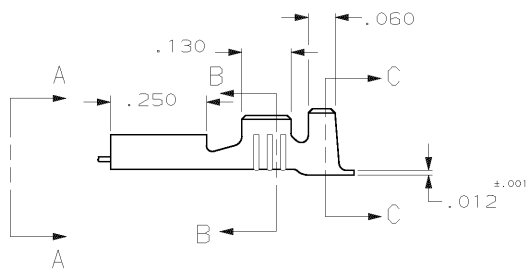
REVISIONS

1 - CONTINUOUS STRIP ON REELS.

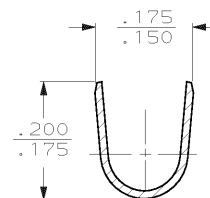


FITS .187 SERIES FASTON TAB

VIEW A-A



SECTION B-B



SECTION C-C

OBSELETE	SILVER	#4H PH BRZ	.090-.130	20-16	.015 ±.001	42453-3
	TIN	#4H BRASS	.090-.130	20-16	.015 ±.001	42453-2
OBSELETE		#4H BRASS	.090-.130	20-16	.015 ±.001	42453-1

FINISH	MATERIAL	INSULATION RANGE	WIRE SIZE	TAB THK.	PART NO
UNLESS OTHERWISE SPECIFIED DIMENSIONS ARE IN INCHES TOLERANCES ON: 2 PL DEC ± - 3 PL DEC ± .015 ANGLES ± -	DR 10/3/86 JR RUTH				
SEE ABOVE	CHK 10/3/86 S VETTER				
SEE ABOVE	APPD 10/22/86 C MEYERS				
SEE ABOVE	APPD 10/27/96 P KUZO				
	PRODUCT SPEC				
	APPLICATION SPEC				
	WEIGHT				

AMP AMP INCORPORATED
Harrisburg, Pa. 17105

NAME .187 SERIES FASTON RECEPTACLE

SIZE B	FSCM NO 00779	DRAWING NO 42453
SCALE NTS	SHEET 1 OF 1	

AMP 1470-15 REV 10-84

18-JUN-97 14:18:25 amp13469 /ks/dept2121/dwg2121/u_faston-prem/u.187-str

CUSTOMER DRAWING