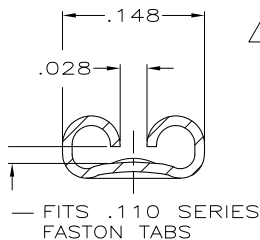
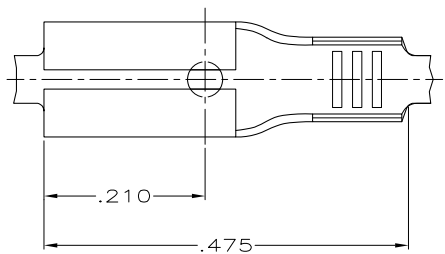


DRAWING MADE IN THIRD ANGLE PROJECTION

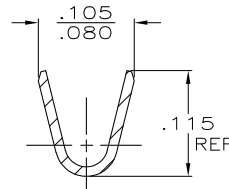
THIS DRAWING IS UNPUBLISHED. RELEASED FOR PUBLICATION, 19  
 © COPYRIGHT 19 BY AMP INCORPORATED. ALL INTERNATIONAL RIGHTS RESERVED.

LOC	DIST	P	F	ZONE	LTR	DESCRIPTION	DATE	APPD
AF	50					D REV PER 0G3A-0495-01	04SEP01	JR/DD
						D1 REVISED PER ECO-09-020932	07SEP09	AEG

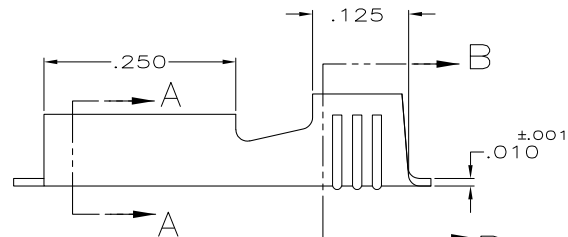
- 1 CONTINUOUS STRIP ON REELS.
- 2 FEED TO BE .535 ±.005.
- 3 62345-2 IS REVERSE REELED.
- 4 OBSOLETE PARTS: OBSOLETE CIS STREAMLINING PER D.RENAUD/D.SINISI



SECTION A-A  
SCALE 10:1



SECTION B-B  
SCALE 10:1



△ OBSOLETE

#20-#18 or (2)#20's	.025	△ 62345-2
#20-#18 or (2)#20's	.025	-62345-1-
WIRE SIZE	MATING TAB THK ±.001	PART NO
DO NOT SCALE PRINT. UNLESS SPECIFIED DIMENSIONS ARE IN INCHES TOLERANCES ON: 2. PLC DEC ± 3. PLC DEC ± .015 ANGLES ±	DR 3/28/91 JR RUTH CHK 3/28/91 MS FEHER APPD 3/28/91 C MEYERS APPD 3/28/91 D REINER	AMP Incorporated Harrisburg, PA 17105-3608
MATERIAL #4H BRASS	PRODUCT SPEC	NAME RECEPTACLE, FASTON,™.110 SERIES
FINISH PRE-TIN	APPLICATION SPEC	SIZE B CAGE CODE 00779 DRAWING NO 62345
	WEIGHT -	SCALE 8:1 SHEET 1 OF 1

AMP 1470-15 REV 11-89  
 Tolson, Inc. 021107.164401 (YMMDD.HHMMSS) from  
 CompuRevision, Inc., Medusa Revision 12.2.51

CUSTOMER DRAWING