

4

3

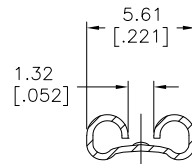
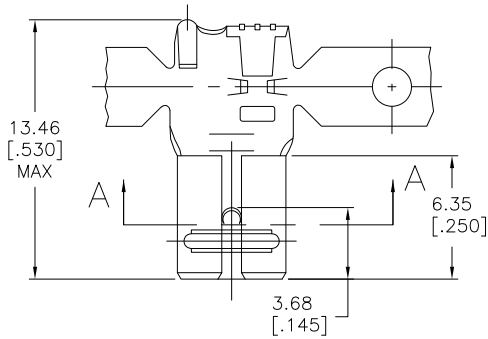
2

1

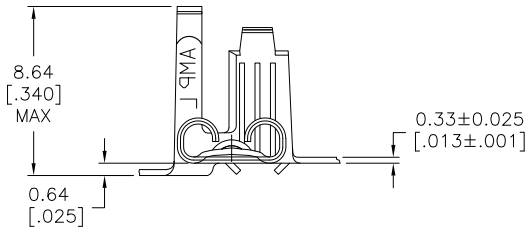
THIS DRAWING IS UNPUBLISHED. RELEASED FOR PUBLICATION
 © COPYRIGHT BY TYCO ELECTRONICS CORPORATION. ALL INTERNATIONAL RIGHTS RESERVED.

LOC		DIST		REVISIONS			
P	LTR	DESCRIPTION		DATE	DWN	APVD	
F1		REVISED PER ECO-09-009918		4/23/09	SS	PD	

1. CONTINUOUS STRIP ON REELS.
2. ACCEPTS [#20-#16] AWG. WIRE SIZE
3. INSULATION RANGE TO BE 2.79-4.32 [.110-.170] DIA
4. FEED IS 16.51 ± 0.076 [.650 \pm .003]



SECTION A-A



TIN	0.51 ± 0.025 [.020 ± .001]	63476-2
-		63476-1
FINISH	MATING TAB THICKNESS	PART NO

THIS DRAWING IS A CONTROLLED DOCUMENT.		DWN	JR RUTH	10/23/87	Tyco Electronics Corporation Harrisburg, PA 17105-3608			
DIMENSIONS: mm [INCHES]		CHK	G YETTER	10/23/87				
TOLERANCES UNLESS OTHERWISE SPECIFIED: 0 PLC ± - 1 PLC ± - 2 PLC ± 0.25 [.010] 3 PLC ± - 4 PLC ± - ANGLES ± -		APVD	R KUZO	10/23/87	NAME			
		PRODUCT SPEC		RECEPTACLE, LIF, FASTON, FLAG, 4.75 [.187] SERIES				
MATERIAL		APPLICATION SPEC		SIZE		CAGE CODE	DRAWING NO	RESTRICTED TO
H04 BRASS		FINISH		A3		00779	C-63476	-
SEE TABLE		WEIGHT		CUSTOMER DRAWING		SCALE	5:1	SHEET 1 of 1
								REV F1