

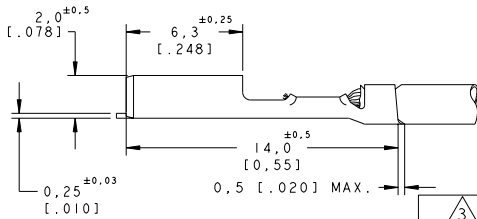
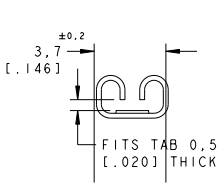
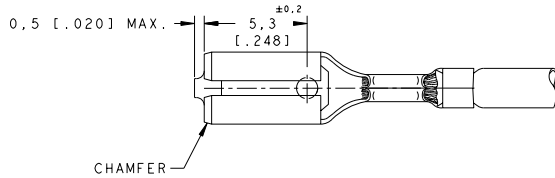
DO NOT SCALE  
DIMENSIONS IN mm

METRIC



NOTES:

- △ SPLICE FREE FOR AMP\_0\_MATOR.  
REELED WITH PAPER LAYER.
- △ OBSOLETE PARTS: OBSOLETE CIS STREAMLINING PER  
D.RENAUD/D.SINISI



△ 3 OBSOLETE

△ 3 OBSOLETE

△ 3 OBSOLETE

WIRE RANGE :  
0,3-0,56 mm  
INSULATION RANGE :  
1,0-2,0 DIA.

FINISH	MATERIAL	PARTNUMBER
TIN	BRASS	6-160316-4
TIN-LEAD	PHOSPHORBRONZE	6-160316-3
TIN-LEAD	BRASS	6-160316-2
PRE-TIN HOT DIP	PHOSPHORBRONZE	6-160316-0
TIN	BRASS	5-160316-9
NONE	BRASS	5-160316-8
GOLD	PHOSPHORBRONZE	5-160316-7
TIN	PHOSPHORBRONZE	5-160316-6
NONE	PHOSPHORBRONZE	5-160316-5
GOLD	BRASS	5-160316-4
SILVER	BRASS	5-160316-3
TIN	BRASS	5-160316-2
NONE	BRASS	5-160316-1

CUSTOMER DRAWING				FOR REFERENCE ONLY WILL NOT BE UPDATED		
© COPYRIGHT 19- BY AMP HOLLAND B.V. ALL INTERNATIONAL RIGHTS RESERVED. AMP PRODUCTS MAY BE COVERED BY U.S. AND FOREIGN AND/OR PATENTS PENDING.						
THIS DRAWING IS UNPUBLISHED RELEASED FOR PUBLICATION						
F2	REVISED PER ECO-09-025699	KK	AEQ	16DEC09	Tyco Electronics Tyco Electronics, ITALIA S.r.l. Corso F.lli Cervi, 15 COLLEGNO (TORINO)	
F1	ET00-0045-02	HY	CT	07 MAR 02	NAME	
F	EH-0243-94	DK	PB	11-04-94	.110 SRS FASTON RECEPTACLE	
LTR.: REVISION RECORD				DR.	CHK.	DATE
DR.:	D.KESSLER	CHK.:	P.BEIJNON	APP.:	L.v.SOEST	
DATE:	11-04-94	DATE:		DATE:		
DWG.No. C-160316			SHEET 1 of 1		REV.LTR. F2	

8 | 7 | 6 | 5 | 4 | 3 | 2 | 1