

THIS COPY IS PROVIDED ON A RESTRICTED BASIS AND IS NOT TO BE USED IN ANY WAY DETRIMENTAL TO THE INTERESTS OF PANDUIT CORP.

PART NUMBER	TAB SIZE	WIRE RANGE AWG	COLOR	MAX. INSUL.	DIMENSIONS in.		
					A $\pm .03$	B $\pm .01$	C $\pm .01$
DV10-250	.250 X .032	12-10	YELLOW	.229 (5.82)	1.03 (26.16)	.30 (7.62)	.13 (3.30)

NOTES:

- UL RECOGNIZED AND CSA CERTIFIED FOR:
  - 600V MAX VOLTAGE RATING
  - 194°F (90°C) MAX TEMP RATING
  - STRANDED COPPER WIRE ONLY
  - 6-12 LBS INITIAL INSERTION/WITHDRAWAL FORCE

- MATERIAL:
  - STAMPING-BRASS, TIN PLATED
  - HOUSING-VINYL
  - SLEEVE-BRASS, TIN PLATED

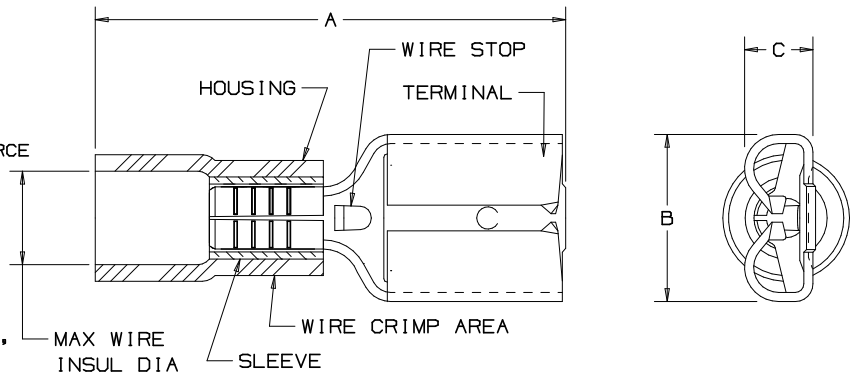
- DIMENSIONS IN BRACKETS ARE IN mm OR mm<sup>2</sup>

- INSTALLATION TOOLS: UL/CSA: CT-550, CT-1551, CT-1550

PANDUIT RECOMMENDED: CT-100  
CT-160  
CT-260  
CT-460

- PACKAGE QTY: -L=50  
-D=500

- WIRE STRIP LENGTH:  $9/32^{+1/32}_{-0}$  (7.1<sup>+0.8</sup><sub>-0</sub>)



CERTIFIED  
LR31212



RECOGNIZED  
E78522

A41199\_06

06	6/06	DAW	DAW	REMOVED MAX. AMPERAGE NOTE				
05	7/03	KLfu	SKB	ADDED INTERNAL SERRATIONS	12453	SKB	TRO	
04	1/01	KMD	SKB	CAD FILE SPEC. WAS N41199AA_PCD_03	8938	JAC	CCH	
03	5/99	JKD		ADDED CT-1551 & CT-1550 TOOLS	07642			
02	3/95	MS	RLS	UPDATED NOTES AND DIMENSIONS	03048	LA	JB	
REV	DATE	BY	CHK	DESCRIPTION	ECN #	CUST	PM	

**PANDUIT** CORP.

TINLEY PARK, ILLINOIS

FEMALE DISCONNECTS, VINYL INSULATED  
.250 X .032

DRAWN BY: FES    CHK'D: RLS    SCALE: NONE    DRAWING NO.: A41199