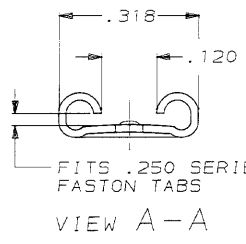
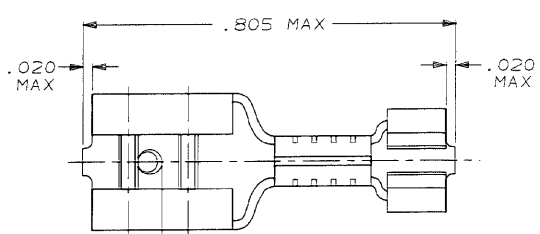


DRAWING MADE IN THIRD ANGLE PROJECTION

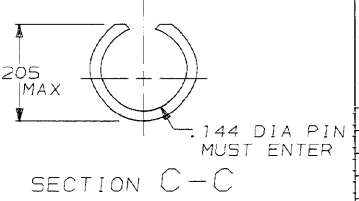
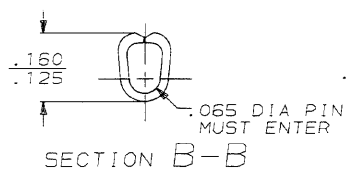
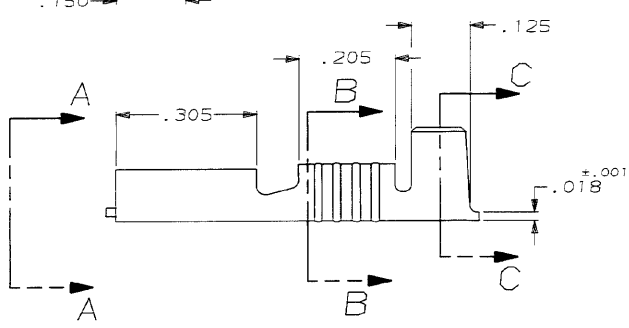
THIS DRAWING IS UNPUBLISHED. RELEASED FOR PUBLICATION .19

© COPYRIGHT 19 BY AMP INCORPORATED. ALL INTERNATIONAL RIGHTS RESERVED.

LDC	DIST	ZONE	LTR	REVISIONS	DATE	APPD
AF	50			E REDRAWN AF-7182	2/13/91	JR/PP



- 1 SUPPLIED IN LOOSE PIECE
- 2 SILVER PLATED .000150 MIN THK.
- 3 TIN PLATED .000080 MIN THK.
- 4 FOREIGN PRODUCTION ONLY.



INSULATION RANGE	WIRE SIZE	FINISH	MATERIAL	MATING TAB THK ±.001	PART NO
.120-.145 DIA	18-16 AWG	TIN Δ	#4H BRASS	.032	42025-4
		TIN Δ	#4H BRASS		42025-3
		SILVER Δ	T3 PHOS BRZ.		42025-2
		TIN Δ	T3 PHOS BRZ.		42025-1
		TIN Δ	T3 PHOS BRZ.		42025

DO NOT SCALE PRINT. UNLESS SPECIFIED DIMENSIONS ARE IN INCHES 2 PLG DEC = - 3 PLG DEC = .015 ANGLES = -	DR 2/13/91 JR RUTH	AMP AMP Incorporated Harrisburg, PA 17105-3608 NAME RECEPTACLE, FASTON, .250 SERIES SIZE CAGE CODE DRAWING NO B 00779 42025 SCALE 5:1 SHEET 1 OF 1
MATERIAL SEE TABLE	CHK 2/13/91 P FORNEY	
FINISH SEE TABLE	APPO 2/13/91 C MEYERS	
	APPD 2/13/91 D REINER	
	PRODUCT SPEC APPLICATION SPEC WEIGHT -	

AMP 1470-15 REV 11-89
12 FEB 1991 08:24:53 APP13469 405126440EP72121-04621214F FASTON-REPTAC .250-S7R

CUSTOMER DRAWING