

4

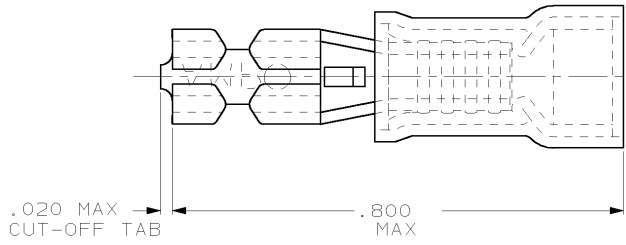
3

2

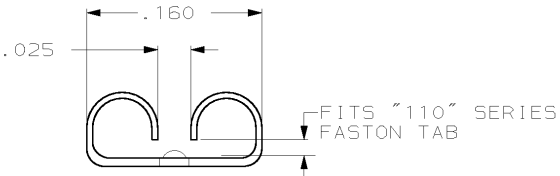
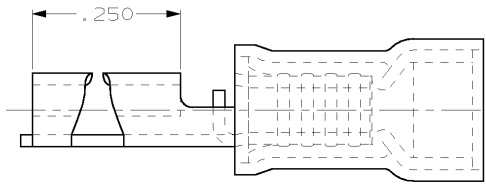
1

THIS DRAWING IS UNPUBLISHED. RELEASED FOR PUBLICATION .19
 © COPYRIGHT 19 BY AMP INCORPORATED. ALL RIGHTS RESERVED.

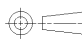

LOC	DIST	REVISIONS			
P	LTR	DESCRIPTION	DATE	DWN	APVD
G	14	REV EPR 063A-0176-02	08APR02	JR	TM



- 1. INSULATION DIA .170 MAX
- 2. FITS TAB .016 THK



-	TAPE MOUNTED	640927-2
-	LOOSE PIECE	640927-1
QTY	PACKAGE TYPE	PART NO

AMP INCORPORATED CUSTOMER SERVICE SYSTEM		MAX RECOMMENDED OPERATING TEMPERATURE: - VOLTAGE RATING: - CIRCULAR MIL AREA: -	THIS DRAWING IS A CONTROLLED DOCUMENT FOR AMP INCORPORATED. IT IS SUBJECT TO CHANGE AND THE CONTROLLING ENGINEERING ORGANIZATION SHOULD BE CONTACTED FOR THE LATEST REVISION. DIMENSIONS: INCHES 	DWN L OLMEDA 13NOV95 CHK M ELLIS 15NOV95 APVD B BARE 15NOV95 NAME RECEPTACLE, 110 SERIES, FASTON™, PID6™, WIRE SIZE, 16-14 AWG SIZE A3 CAGE CODE 00779 DRAWING NO. 640927	 AMP Incorporated Harrisburg, PA 17105-3608
FOR ADDITIONAL PRODUCT INFORMATION OR COPIES OF DRAWINGS AND TECHNICAL DOCUMENTS PRODUCT INFORMATION CENTER 1-800-522-6752	FOR APPLICATION TOOLING INFORMATION TOOLING ASSISTANCE CENTER 1-800-722-1111	MATERIAL BODY, BRASS .016 SLV, NYLON, COLOR, BLUE FINISH BODY, PRE-T1N	TOLERANCES UNLESS OTHERWISE SPECIFIED: 0 PLC ±- 1 PLC ±- 2 PLC ±.015 3 PLC ±- 4 PLC ±- ANGLES ±-	WEIGHT - CUSTOMER DRAWING	SCALE NTS SHEET 1 OF 1 REV G

AMP 1470-19 REV 09MAY94
 22 JAN 1996 15:16:29 AMP12368 <U128A>DEPT1132-U, DWG1132-U, RBY-U, FASTON-U, CUST