

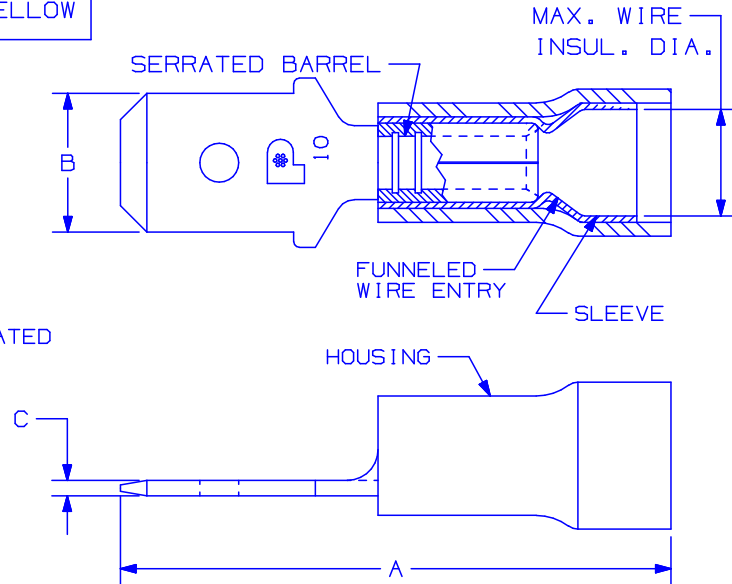
THIS COPY IS PROVIDED ON A RESTRICTED BASIS AND IS NOT TO BE USED IN ANY WAY DETRIMENTAL TO THE INTERESTS OF PANDUIT CORP.

PANDUIT PART NUMBER		WIRE RANGE AWG	MAX. WIRE INSUL. DIA.	DIMENSIONS in.			HOUSING COLOR
PREFIX	PKG			A $\pm .03$	B $\pm .01$	C $\pm .002$	
DNF18-250M	-C -M	22-18	.136 (3,5)	.90 (22,9)	.25 (6,4)	.032 (0,81)	RED
DNF14-250M	-C -M	16-14	.162 (4,1)	.90 (22,9)	.25 (6,4)	.032 (0,81)	BLUE
DNF10-250M*	-L -D	12-10	.230 (5,8)	1.03 (26,2)	.25 (6,4)	.032 (0,81)	YELLOW

*NOT UL LISTED OR CSA CERTIFIED

NOTES:

- CSA CERTIFIED FOR:
 - A. 600V. MAX. VOLTAGE RATING
 - B. 221° F (105° C) MAX. TEMP. RATING
 - C. FOR STRANDED COPPER WIRE ONLY
- MATERIAL:
 - A. STAMPING - .032 (.81) THK COPPER, NICKEL PLATED
 - B. HOUSING - NYLON
 - C. SLEEVE - BRASS, TIN PLATED
- PACKAGE QTY: STD. PKG. -L=50
 BULK PKG. -C=100
 -D=500
 -M=1000
- DIMENSIONS IN BRACKETS ARE IN MILLIMETERS
- INSTALLATION TOOLS:
 - A. CSA CERTIFIED: CT-100, CT-1550, CT-1551
 - B. PANDUIT APPROVED: CT-160, CT-260
- WIRE STRIP LENGTH: $9/32^{+1/32}_0$ (7.1 $^{+0.8}_0$)



CERTIFIED LR31212 A41322_08

08	11/04	KLFU		ADDED LOGO AND MARKING 10			
07	7/01	JAMB	RLS	ADDED PACKAGING COLUMN TO TABLE	09498	TRO	JAC
06	1/01	RM	SKB	FILESPEC WAS N41322AA_PCD_05	08925	TRO	JCJ
05	10/00	SB	SKB	ADDED DNF10-250M AND REMOVED CT-500 & CT-550 TOOLS	08739	TRO	JCJ
04	3/99	JD	SKB	ADDED CT-1551 & CT-1550 TOOLS	07634	TRO	JCJ
REV	DATE	BY	CHK	DESCRIPTION	ECN #	PM	CUST

PANDUIT CORP.

TINLEY PARK, ILLINOIS

NYLON INSULATED MALE DISCONNECT
 FUNNELED WIRE ENTRY
 .250 X .032 (6.35 X 0.81) MALE TAB

DRAWN BY DAW CHK'D RLS SCALE NONE DRAWING NO. A41322