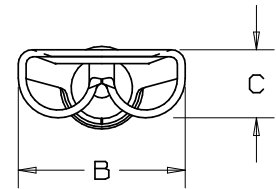


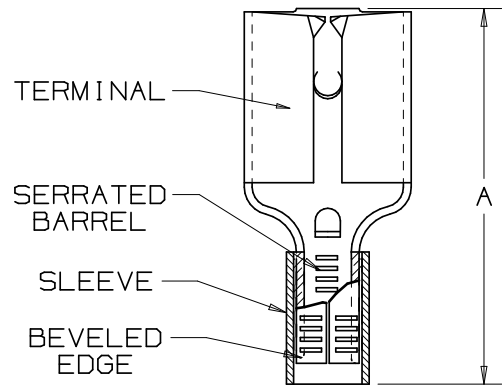
THIS COPY IS PROVIDED ON A RESTRICTED BASIS AND IS NOT TO BE USED IN ANY WAY DETRIMENTAL TO THE INTERESTS OF PANDUIT CORP.

PART NUMBER		TAB SIZE	WIRE RANGE AWG (mm <sup>2</sup> )	DIMENSIONS in		
PREFIX	PKG			A $\pm .015$ (0.4)	B $\pm .010$ (0.3)	C $\pm .010$ (0.3)
D18-188	-C -M	.187 x .020 (4.8 x 0.5)	22-18 (.5-1.0)	.58 (14.7)	.23 (5.8)	.10 (2.5)
*D14-188	-C -M	.187 x .020 (4.8 x 0.5)	16-14 (1.5-2.5)	.58 (14.7)	.23 (5.8)	.10 (2.5)
D18-187	-C -M	.187 x .032 (4.8 x 0.8)	22-18 (.5-1.0)	.58 (14.7)	.23 (5.8)	.10 (2.5)
*D14-187	-C -M	.187 x .032 (4.8 x 0.8)	16-14 (1.5-2.5)	.58 (14.7)	.23 (5.8)	.10 (2.5)



NOTES:

- UL LISTED, UL RECOGNIZED (D14-187 & D14-188 ONLY) AND CSA CERTIFIED FOR:  
A. STRANDED COPPER WIRE ONLY  
B. 302° F (150° C) MAX TEMP RATING
- PACKAGE QTY:  
A. STD: -C=100  
B. BULK:-M=1000
- MATERIAL:  
A. STAMPING: .016 (0.41) THK BRASS, TIN PLATED  
B. SLEEVE: BRASS, TIN PLATED
- WIRE STRIP LENGTH 9/32 <sup>+1/32</sup> (7.1 <sup>+0.8</sup>), <sub>-0</sub> <sub>-0</sub>
- FIRST INSERTION FORCE: 12 LB (53N) MAX  
FIRST WITHDRAWAL FORCE: 12 LB (53N) MAX  
6 LB (27N) MIN
- INSTALLATION TOOLS:  
A. UL LISTED AND CSA CERTIFIED: CT-100, CT-200, CT-570, CT-1570, CT-2457CH  
B. UL RECOGNIZED: CT-100, CT-200, CT-570, CT-1570, CT-2457CH  
C. PANDUIT APPROVED: CT-160, CT-260
- DIMENSIONS IN BRACKETS ARE IN MILLIMETERS OR mm<sup>2</sup>



LISTED  
20H3  
E78522



CERTIFIED  
LR31212



RECOGNIZED  
E78522

A41305\_08



CORP. TINLEY PARK, ILLINOIS

NON-INSULATED FEMALE DISCONNECT,  
SLEEVED BARREL (.188 SERIES)

08	6/06	DAW	DAW	REMOVED MAX. AMPERAGE RATING	TR00134				
07	7/03	KLFU	SKB	ADDED INTERNAL SERRATIONS WIRE RANGE 1.0 WAS 1.5	012453		SKB	TRO	
06	1/01	RM	SKB	FILESPEC WAS N41305AA_PCD_05	08933		JAC	CCH	
05	10/96	TM		ADD 187'S, UPDATED NOTES, FILESPEC WAS NPC_41305_04	05164				
04	3/95	MS	RS	UPDATED NOTES AND DIMENSIONS	03051		LA	KS	
REV	DATE	BY	CHK	DESCRIPTION	ECN #	QA	CUST	PM	APP

DRAWN BY	DAW	CHK'D	SCALE	NONE	DRAWING NO.	A41305
----------	-----	-------	-------	------	-------------	--------