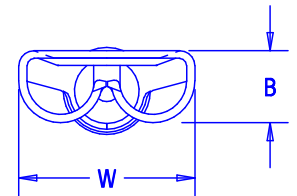


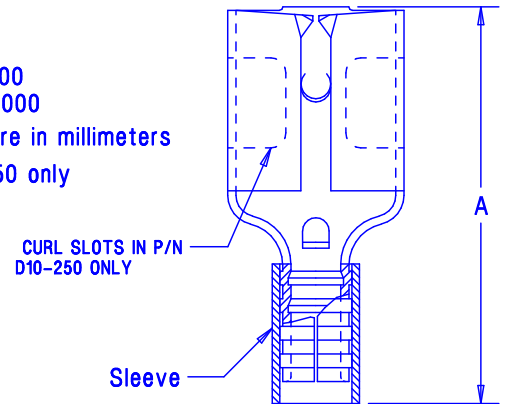
THIS COPY IS PROVIDED ON A RESTRICTED BASIS AND IS NOT TO BE USED IN ANY WAY DETRIMENTAL TO THE INTERESTS OF PANDUIT CORP.

Part number		Tab size	Wire range AWG	Dimensions in.		
Prefix	PK			A $\begin{smallmatrix} +/- .03 \\ (.8) \end{smallmatrix}$	B $\begin{smallmatrix} +/- .01 \\ (.3) \end{smallmatrix}$	W $\begin{smallmatrix} +/- .01 \\ (.3) \end{smallmatrix}$
D18-250	-C -M	.250 X .032 (6.3 X 0.8)	22-18	.66 (16.8)	.12 (3.0)	.30 (7.6)
D14-250	-C -M	.250 X .032 (6.3 X 0.8)	16-14	.66 (16.8)	.12 (3.0)	.30 (7.6)
D10-250	-L -D	.250 X .032 (6.3 X 0.8)	12-10	.72 (18.3)	.12 (3.0)	.30 (7.6)



**Notes:**

- Used for:
  - 302° (150° C) maximum temperature rating
  - Stranded copper wire only
- First insertion force : 12 Lb (53N) maximum  
First withdrawal force: 12 Lb (53N) maximum  
6 Lb (27N) minimum
- Installation tools:
  - UL listed and CSA certified: CT-100, CT-200, CT-570, CT-1570, CT-2457CH
  - UL recognized : CT-100, CT-200, CT-570, CT-1570, CT-2457CH
  - Panduit approved : CT-160, CT-260
- Wire strip length: 9/32  $\begin{smallmatrix} +1/32 \\ -0 \end{smallmatrix}$  (7.1  $\begin{smallmatrix} +.8 \\ -.0 \end{smallmatrix}$ )
- Material:
  - Stamping: .016" (0.41) thick tin plated brass  
D18-250 & D14-250  
.018" (0.46) thick tin plated brass  
D10-250 only
  - Sleeve : Tin plated brass
- Packaging:
  - Std : -L = 50 -C = 100
  - Bulk: -D = 500 -M = 1000
- Dimensions in brackets are in millimeters
- UL recognized for D14-250 only



11	5/04	JHNU		ADDED CURL SLOTS IN VIEW.				
10	1/01	RM	SKB	FILESPEC WAS N41304AA_PCD_09	08933	JAC	CCH	
9	10/96	TSM		UPDATED INSTALLATION TOOL NOTE	05166			
8	4-94	SM	JW	REMOVED CURL FLOOR SLOTS	02215	LA	JJMO	
7	9/93	BK	RS	Updated format & dim. File spec was A41304A	01832	LA	JM	
REV	DATE	BY	CHK	DESCRIPTION	ECN #	CUST	PM	

A41304\_11



CORP.

TINLEY PARK, ILLINOIS

Non-insulated, sleeved barrel female disconnect (.250 series)

DRAWN BY	CHK'D	SCALE	DRAWING NO.
DAW	RS	None	A41304