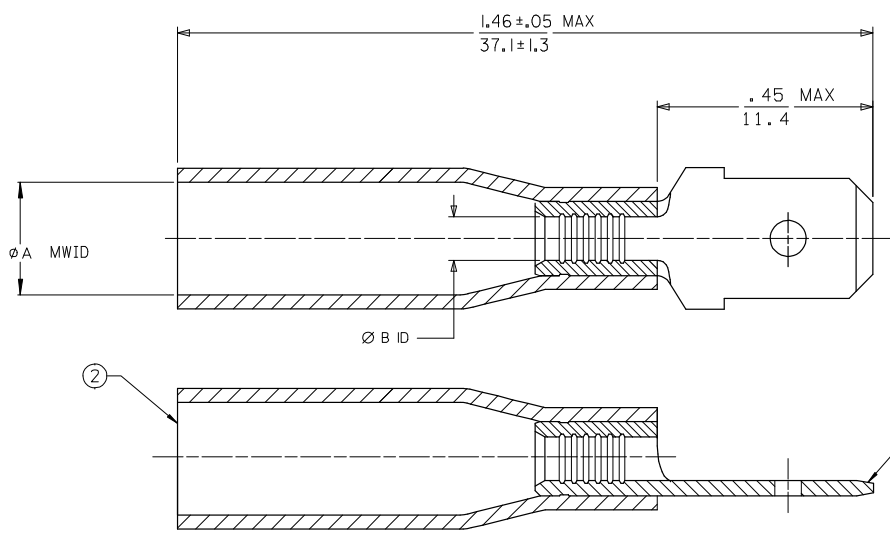


10	9	8	7	6	5	4	3	2	19164
MATERIAL NO.	ENGINEERING NO.	φA MWID	φB ID	TERMINAL MATERIAL	TERMINAL FINISH				
191640019	SAMCT-2	.185/4.70 (D)	.054/1.37 (D)	BRASS, .031/0.79 THK REF	ZINC CHROMATE				
191640084	SMCT-2	.195/4.95 (D)	.082/2.08	BRASS, .031/0.79 THK REF	ZINC CHROMATE				
191640078	SCMCT-2	.275/6.99 (D)	.144/3.65 (D)	BRASS, .031/0.79 THK REF	ZINC CHROMATE				



- NOTES:
- (D) 1. TAB DIMENSIONS PER UL310 SPECIFICATIONS.
  - (D) 2. TAB MATERIAL: SEE CHART  
FINISH: SEE CHART
  - (D) 3. INSULATION MATERIAL: HEAT SHRINKABLE TUBING WITH HOTMELT ADHESIVE INNER LINER.
  - (D) 4. MWID = MAXIMUM WIRE INSULATION DIAMETER.
  - (D) 5. PART IS ROHS COMPLAINT.

SALES DRAWING

CHANGED MATL & FINISH EC NO: ETC2007-0081 DRAWN BY: DRW:RHFHLE 2008/01/28 CHKD: JMACNEIL 2008/01/28 APPR: JMACNEIL 2008/02/13 DESCRIPTION REV	QUALITY SYMBOLS	GENERAL TOLERANCES (UNLESS SPECIFIED)	DIMENSION STYLE IN/MM	SCALE ---	DESIGN UNITS INCH	THIRD ANGLE PROJECTION
	▽=0	4 PLACES ± --- ± ---	DRAWN BY JLOMASTRO DATE 05/10/13			TITLE PERMA-SEAL QD MALE TERMINAL LONG BARREL
	▽=0	3 PLACES ± --- ± .005	CHECKED BY RDEROSS DATE 05/10/13			MOLEX INCORPORATED
		2 PLACES ± 0.13 ± .010	APPROVED BY RDEROSS DATE 05/10/13			DOCUMENT NO. SD-19164-049
		1 PLACE ± 0.25 ± ---				
		ANGULAR ± --- °				
		DRAFT WHERE APPLICABLE MUST REMAIN WITHIN DIMENSIONS	MATERIAL NO. SEE CHART			
			SIZE B	THIS DRAWING CONTAINS INFORMATION THAT IS PROPRIETARY TO MOLEX INCORPORATED AND SHOULD NOT BE USED WITHOUT WRITTEN PERMISSION		

ib\_frame\_B\_P\_ME\_1 Rev. D 2004/04/02