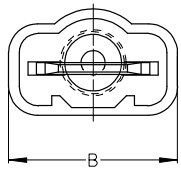
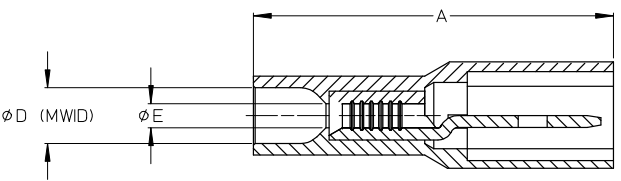
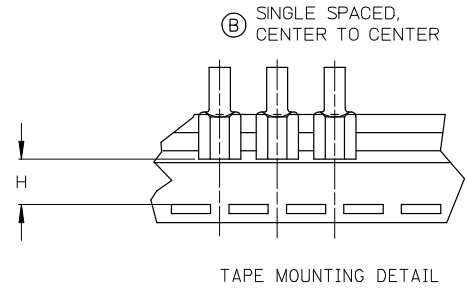
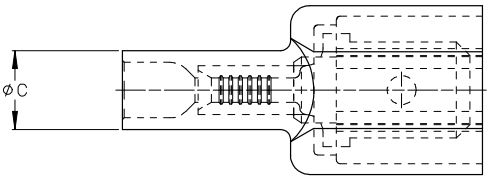


ASSEMBLY NUMBER		TAPE NUMBER		ITEM DESCRIPTION			DIMENSIONS					
MATERIAL NUMBER	ENGINEERING NUMBER	MATERIAL NUMBER	TAPE ENG. NUMBER	COLOR	WIRE GAUGE	TAB SIZE	'A' MAX	'B' MAX	'C' MAX	'D' MIN	'E' MIN	'H' REF
190040001	AA-2260	190040004	AA-2260T	RED	22-18 AWG (0.38-0.96mm ²)	250x.032 (6.35x0.81)	.97/24.6	.45/11.4	.23/5.8	.145/3.68	(B).054/1.37	.48/12.2
190040005	BB-2262	190040008	BB-2262T	BLUE	16-14 AWG (1.23-1.94 mm ²)	250x.032 (6.35x0.81)	.97/24.6	.45/11.4	.23/5.8	.170/4.32	.083/2.11	.48/12.2



- (B) NOTES:
1. TERMINAL MATERIAL: BRASS
 2. TERMINAL PLATING: ZINC CHROMATE
 3. HOUSING: 6/6 NYLON
 4. MVID: MAXIMUM WIRE INSULATION DIAMETER
 5. TAB DIMENSIONS CONFORM TO UL310 SPECIFICATIONS.
 6. ASSEMBLY IS ROHS COMPLIANT

REDRAW: MATERIALS EC NO: ETC2007-0081 DRAWN BY: DRW:HFHLE CHKD: JMACNEIL APPR: JMACNEIL 2008/01/28 2008/01/28 2008/02/13	QUALITY SYMBOLS ▽=0 ▽=0	GENERAL TOLERANCES (UNLESS SPECIFIED)		DIMENSION STYLE IN/MM (B)	SCALE 4:1	DESIGN UNITS INCH	THIRD ANGLE PROJECTION
		4 PLACES ± --- ± --- 3 PLACES ± --- ± --- 2 PLACES ± --- ± --- 1 PLACE ± --- ± ---	mm INCH DRAWN BY: EMF DATE: 1993/06/25 CHECKED BY: DATE: APPROVED BY: DATE:	TITLE FULLY INSULATED MALE COUPLER, INSULKRIMP			
B	DESCRIPTION	DRAFT WHERE APPLICABLE MUST REMAIN WITHIN DIMENSIONS		MATERIAL NO. SEE CHART	DOCUMENT NO. SD-19004-001	MOLEX INCORPORATED	
				SIZE B	THIS DRAWING CONTAINS INFORMATION THAT IS PROPRIETARY TO MOLEX INCORPORATED AND SHOULD NOT BE USED WITHOUT WRITTEN PERMISSION		