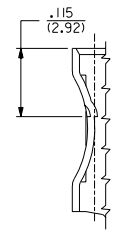
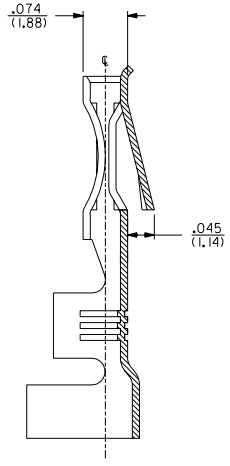
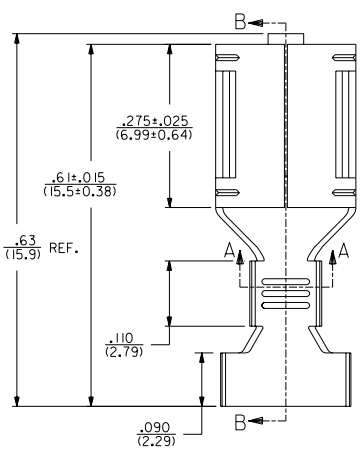
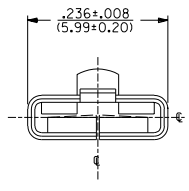


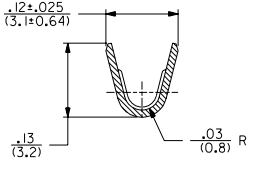
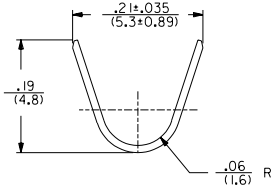
13 12 11 10 9 8 7 6 5 4 3 2 1

2176		4	3	2	1
PART NO.	ENG. NO.	DESCRIPTION			
05-06-0301	2176-T	TIN PLATE			
05-06-0303	2176-AT	WITHOUT DETENT, TIN PLATED			
NOT TOOLED	X-2176-999A	WITHOUT DETENT, UNPLATED			
05-06-0302	2176-(P90)IL	WITH DETENT, PLATED, LOOSE			
05-06-0304	2176-(P90)IAL	WITHOUT DETENT, PLATED, LOOSE			



DETENT LOCATION
SCALE 8:1

- NOTES:
1. CRIMP FOR #14 THRU #22 GA. WIRE, ALSO (2) #18 GA. WIRE WITH .03 (0.79) THK. INSULATION.
 2. MATERIAL: .010/(0.25) THK. 70/30 BRASS ALLOY. PRE-TIN PLATED.
 3. PRODUCT SPECIFICATION 05-06-1 APPLIES.



SECTION A-A
SCALE 8:1

E REDRAWN ON CAD PER IUCR2000-0804 00/07/13 ES

DIMENSIONS SHOWN IN METRIC INCH		TOLERANCES: ANGULAR ± 1/2°		REVISIONS	
SCALE: OTHERWISE SPECIFIED		REVISIONS		MFG. SHL. REV. LTR.	
DRAFT WHERE APPLICABLE MUST REMAIN WITHIN DIMENSIONS		TITLE		REVISIONS	
DRWG. BY: MAB		TERMINAL FOR .020/(0.51) X .187/(4.75) SPADE		REV. 0	
CHK'D BY: KBP		MOLEX INCORPORATED		SHEET NO. 1 OF 1	
APP'D BY: RAS		FILE NAME: SD2176X1		DATE: 92/10/26	
SCALE: 8:1		MOLEX INC. AND SHOULD NOT BE USED WITHOUT WRITTEN PERMISSION.		DRWG. NO. SD-2176-*	

13 12 11 10 9 8 7 6 5 4 3 2 1