

4

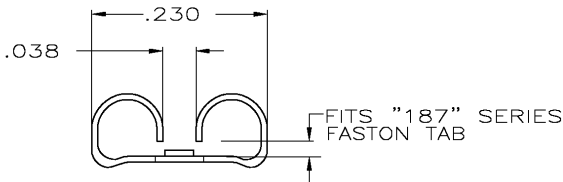
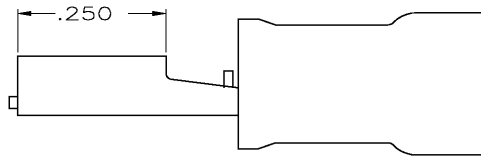
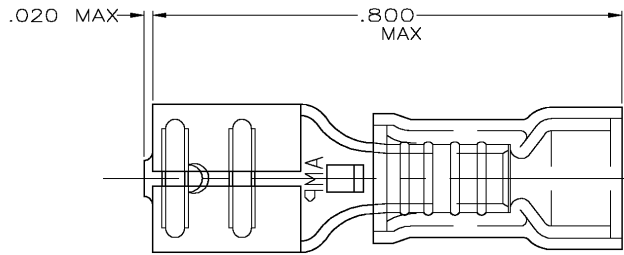
3

2

1

THIS DRAWING IS UNPUBLISHED. RELEASED FOR PUBLICATION
 © COPYRIGHT - BY TYCO ELECTRONICS CORPORATION. ALL RIGHTS RESERVED.

LOC	DIST	REVISIONS				
P	LTR	DESCRIPTION	DATE	DWN	APVD	
G	14	C	REV PER OG3A-0112-05	16FEB05	JR	TM



- 1 INSULATION RANGE IS .170 MAX
- 2 FITS TAB .032 THK
- 3 MATERIAL: TERMINAL - BRASS
SLEEVE: NYLON
- 4 FINISH: TERMINAL - TIN PLATED
SLEEVE - COLOR BLUE

4000	TAPE MOUNTED	184235-2
1000	LOOSE PIECE	184235-1
QTY	SUPPLIED AS	PART NO

AMP INCORPORATED CUSTOMER SERVICE SYSTEMS		MAX RECOMMENDED OPERATING TEMPERATURE: [105°C] 221° F	THIS DRAWING IS A CONTROLLED DOCUMENT.		DWN L OLMEDA 16JAN98 CHK M ELLIS 16JAN98 APVD B BARE 16JAN98	Tyco Electronics Corporation Harrisburg, Pa 17105-3608
FOR ADDITIONAL PRODUCT INFORMATION OR COPIES OF DRAWINGS AND TECHNICAL DOCUMENTS PRODUCT INFORMATION CENTER 1-800-522-6752	FOR APPLICATION TOOLING ASSISTANCE CENTER TOOLING INFORMATION 1-800-722-1111	VOLTAGE RATING: 300V MAX	DIMENSIONS: INCHES	TOLERANCES UNLESS OTHERWISE SPECIFIED: 0 PLC ± - 1 PLC ± - 2 PLC ± .015 3 PLC ± - 4 PLC ± - ANGLES ± -	PRODUCT SPEC APPLICATION SPEC WEIGHT -	RECEPTACLE, 187 SERIES, FASTON, PIDG, WIRE SIZE: 16-14
FOR ORDER ENTRY 1-800-526-5142	THIS DRAWING IS A CONTROLLED DOCUMENT FOR AMP INCORPORATED. IT IS SUBJECT TO CHANGE AND THE CONTROLLING ENGINEERING ORGANIZATION SHOULD BE CONTACTED FOR THE LATEST REVISION.	CIRCULAR MIL AREA: [1.04-2.62mm ²] 2,050-5,180 SOLID OR STRANDED	MATERIAL - 3	FINISH - 4	SIZE A3 CAGE CODE 00779 DRAWING NO C-184235 RESTRICTED TO -	CUSTOMER DRAWING SCALE 6:1 SHEET 1 OF 1 REV C

AMP 1470-19 REV 31MAR2000