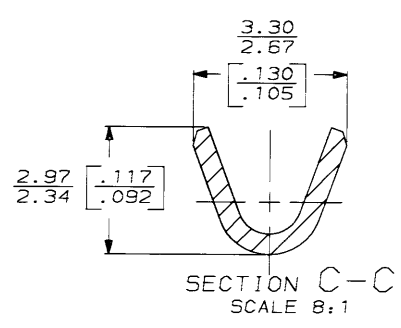
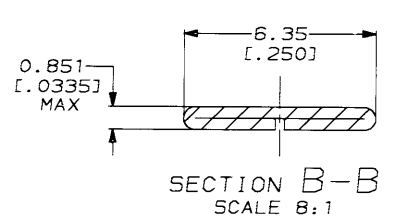
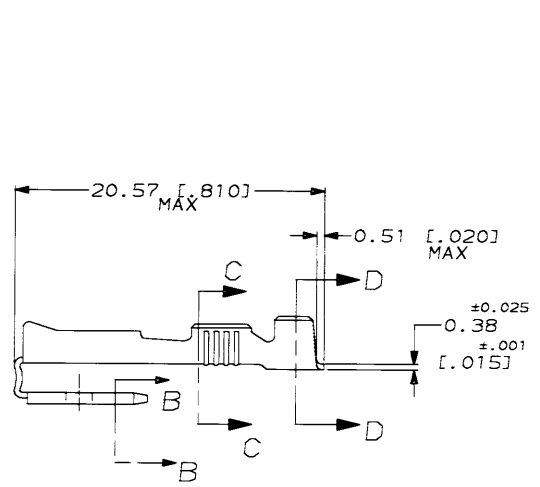
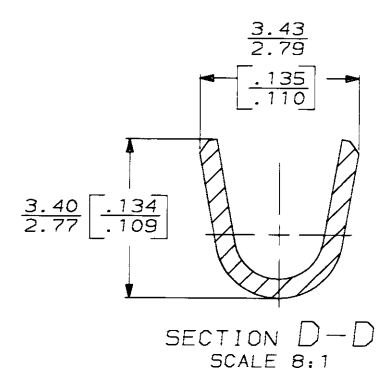


DRAWING MADE IN THIRD ANGLE PROJECTION
 THIS DRAWING IS UNPUBLISHED. RELEASED FOR PUBLICATION
 © COPYRIGHT 19 BY AMP INCORPORATED. ALL INTERNATIONAL RIGHTS RESERVED.

LOC	DIST	P	F	ZONE	LTR	REVISIONS	DATE	APPD
AF	50					0 DRAWN	11/17/93	JR/JG



1 SUPPLIED IN LOOSE PIECE.



THIS DRAWING IS A CONTROLLED DOCUMENT FOR AMP INCORPORATED. IT IS SUBJECT TO CHANGE AND THE CONTROLLING ENGINEERING ORGANIZATION SHOULD BE CONTACTED FOR THE LATEST REVISION.

	[#22-#18] AWG	TIN	62274-1
	WIRE SIZE	FINISH	PART NO
DO NOT SCALE PRINT. UNLESS SPECIFIED DIMENSIONS IN INCHES TOLERANCES ON: 2 PLC DEC ± 0.25 [0.010] 3 PLC DEC ± - ANGLES ± -	DR 11/17/93 JR RUTH CHK 11/17/93 MS FENER APPD 11/17/93 J GILLESPIE R REIMER	AMP	AMP Incorporated Harrisburg, PA 17105-3608
MATERIAL #4H BRASS	PRODUCT SPEC -	NAME RECEPTACLE, FASTON, 6.35 [0.250] SERIES	
FINISH SEE TABLE	APPLICATION SPEC -	SIZE B	CASE CODE 00779
	WEIGHT -	DRAWING NO C-62274	SHEET 1 OF 1