

4

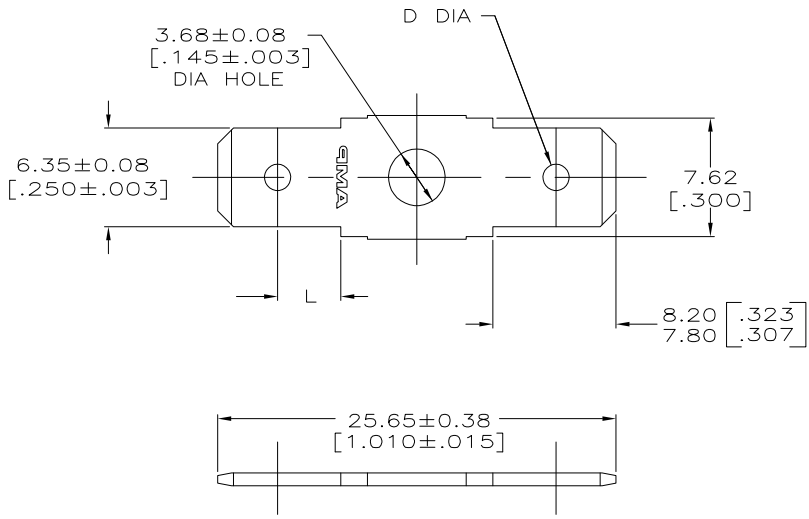
3

2

1

THIS DRAWING IS UNPUBLISHED. RELEASED FOR PUBLICATION  
 © COPYRIGHT - BY TYCO ELECTRONICS CORPORATION. ALL RIGHTS RESERVED.

LOC	DIST	REVISIONS					
AF	50	P	LTR	DESCRIPTION	DATE	DWN	APVD
		H1		REV PER ECR-06-018933	11AUG06	HMR	KR



- 1 SUPPLIED IN LOOSE PIECE.
- 2 ELECTRICAL TEST TAB ONLY.
- 3 PRELIMINARY - NOT FOR PRODUCTION

2.03 [.080] 1.93 [.076] DIA HOLE	4.01±0.08 [.158±.003]	0.002032 [.000080] MIN TIN	0.813±0.012 [.032±.0005] CR STEEL	62627-4 <sup>3</sup>
2.03 [.080] 1.65 [.065] DIA HOLE	3.40±0.08 [.134±.003]	-	0.813±0.007 [.032±.0003] BRASS	62627-3
2.03 [.080] 1.65 [.065] DIA DIMPLE	4.06±0.08 [.160±.003]	0.002032 [.000080] MIN TIN	0.813±0.012 [.032±.0005] CR STEEL	62627-2
DIM D	DIM L	FINISH	MATERIAL	PART NO.
THIS DRAWING IS A CONTROLLED DOCUMENT.		DWN JR RUTH 8/6/96 CHK MS FEHER 8/6/96 APVD P DESANTIS 8/6/96 Tyco Electronics Corporation Harrisburg, PA 17105-3608 NAME PRODUCT SPEC APPLICATION SPEC WEIGHT SIZE CAGE CODE DRAWING NO A300779 C=62627 RESTRICTED TO		
DIMENSIONS: mm [INCHES]		TOLERANCES UNLESS OTHERWISE SPECIFIED: 0 PLC ± - 1 PLC ± - 2 PLC ± 0.25 [.010] 3 PLC ± - 4 PLC ± - ANGLES ± -		
MATERIAL SEE TABLE		FINISH SEE TABLE		
CUSTOMER DRAWING		SCALE 4:1	SHEET 1 of 1	REV H1

AMP 1470-19 REV 31MAR2000