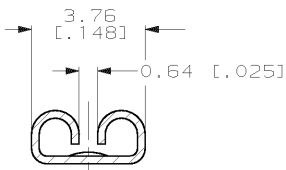
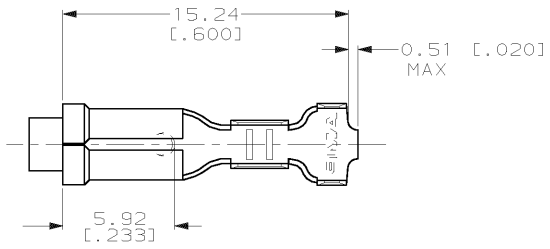


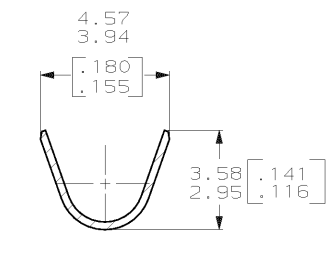
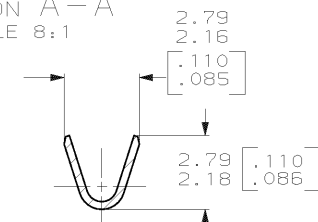
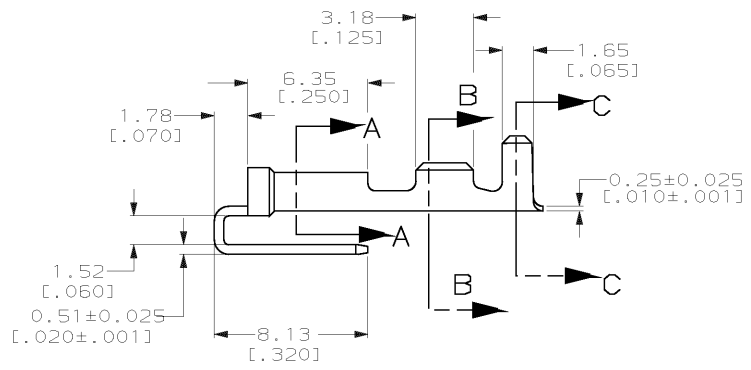
DRAWING MADE IN THIRD ANGLE PROJECTION

THIS DRAWING IS UNPUBLISHED. RELEASED FOR PUBLICATION, 19...
 © COPYRIGHT 19... BY AMP INCORPORATED. ALL INTERNATIONAL RIGHTS RESERVED.

LOC	DIST	P	F	ZONE	LTR	DESCRIPTION	DATE	APPD
AF	50				A	REV PER 0L10-0521-97	1/16/98	JR/JG



- 1 SUPPLIED IN LOOSE PIECE.
- 2 TIN PLATE 0.002032 [.000080] MIN THK.
- 3 REF STRIP BASE P/N 62003



OBSOLETE	1.52-2.54 DIA	[#22-#18] AWG	0.508±0.025	TIN	62112-2
	[.060-.100] DIA		[.020±.001]	-	62112-1
	INSULATION RANGE	WIRE SIZE	MATING TAB THICKNESS	FINISH	PART NO
DO NOT SCALE PRINT. UNLESS SPECIFIED DIMENSIONS IN mm [INCHES] TOLERANCES ON: 2. PLC DEC ± 0.38 [.015] 3. PLC DEC ± - ANGLES ± -	DR 5/16/95 JR RUTH	AMP	AMP Incorporated Harrisburg, PA 17105-3608		
MATERIAL H04 BRASS	CHK 5/16/95 MS FEHER	NAME RECEPTACLE, FASTON,™ PIGGYBACK, 2.79 [.110] SERIES			
FINISH SEE TABLE	APPD 5/16/95 P DESANTIS				
	APPD 5/16/95 R REINER	PRODUCT SPEC -	SIZE B	CAGE CODE 00779	DRAWING NO C=62112
	APPLICATION SPEC -	WEIGHT -	SCALE 5:1	SHEET 1 OF 1	

THIS DRAWING IS A CONTROLLED DOCUMENT FOR AMP INCORPORATED. IT IS SUBJECT TO CHANGE AND THE CONTROLLING ENGINEERING ORGANIZATION SHOULD BE CONTACTED FOR THE LATEST REVISION.