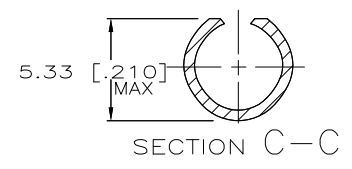
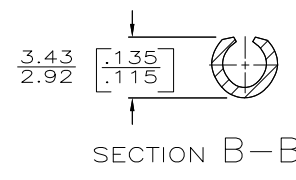
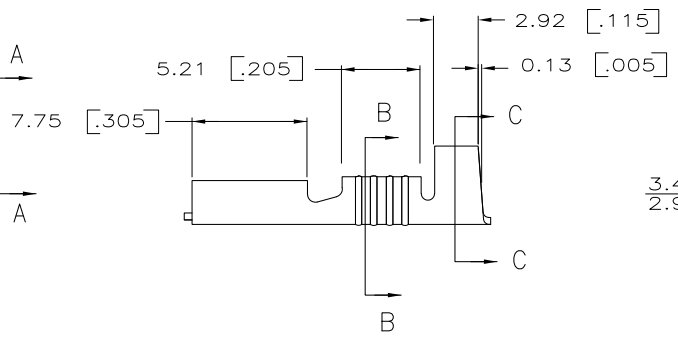
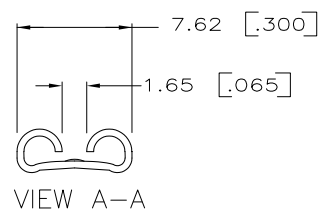
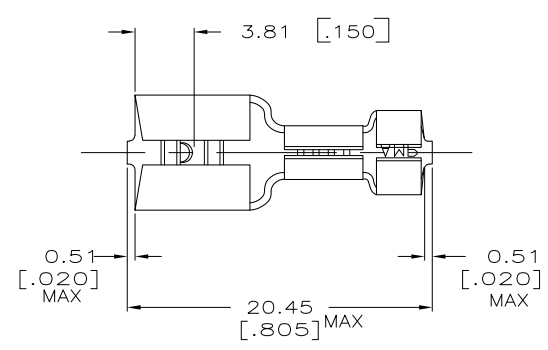


THIS DRAWING IS UNPUBLISHED. RELEASED FOR PUBLICATION  
 © COPYRIGHT - By - ALL RIGHTS RESERVED.

| LOC | DIST | REVISIONS                 |         |     |      |
|-----|------|---------------------------|---------|-----|------|
| P   | LTR  | DESCRIPTION               | DATE    | DWN | APVD |
| AF  | 50   |                           |         |     |      |
|     | J4   | REVISED PER ECO-11-004820 | 11MAR11 | RK  | HMR  |



- 1 SUPPLIED IN LOOSE PIECE
  - 2 FOREIGN PRODUCTION ONLY.
  - 3 MATING TAB THK IS 0.81±0.025 [.032±.001].
  - 4 WIRE SIZE 0.8-1.3mm2 [18-16] AWG.
  - 5 INSULATION RANGE IS 3.05-3.68 [.120-.145] DIA.
- ⚠️ SPECIAL PACKAGE QTY  
 ⚠️ OBSOLETE PARTS: OBSOLETE CIS STREAMLINING PER D.RENAUD/D.SINISI

|             |         |              |
|-------------|---------|--------------|
| ⚠️ OBSOLETE | -       | ⚠️ 8-41729-1 |
|             | 41274-1 | ⚠️ 41729-2   |
|             | 41274   | 41729        |
|             | STRIP   | PART NO      |

|   |                   |        |                 |         |  |
|---|-------------------|--------|-----------------|---------|--|
| THIS DRAWING IS A CONTROLLED DOCUMENT.  |                   | DWN    | JR RUTH         | 2/11/91 | TE Connectivity<br>RECEPTACLE, FASTON,<br>6.35 [.250] SERIES |
| DIMENSIONS: mm(INCHES)  |                   | CHK    | MS FEHER        | 2/11/91 |  |
| TOLERANCES UNLESS OTHERWISE SPECIFIED:  |                   | APVD   | C MEYERS        | 2/11/91 |  |
| 0 PLC ± -<br>1 PLC ± -<br>2 PLC ± 0.25 [.010]<br>3 PLC ± -<br>4 PLC ± -<br>ANGLES ± - |                   | NAME   |                 |         |  |
| MATERIAL  | 0.46 [.018] BRASS | FINISH | .000080 MIN TIN | WEIGHT  | -  |
| CUSTOMER DRAWING  |                   |        |                 | SCALE   | 4:1  |
|   |                   |        |                 | SHEET   | 1 of 1   |
|   |                   |        |                 | REV     | J4   |