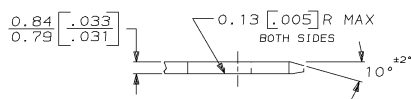
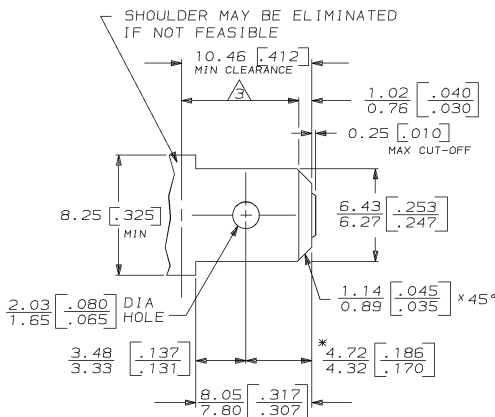


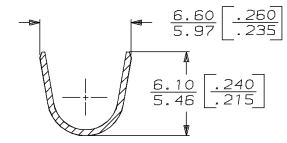
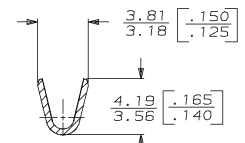
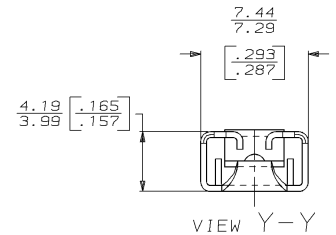
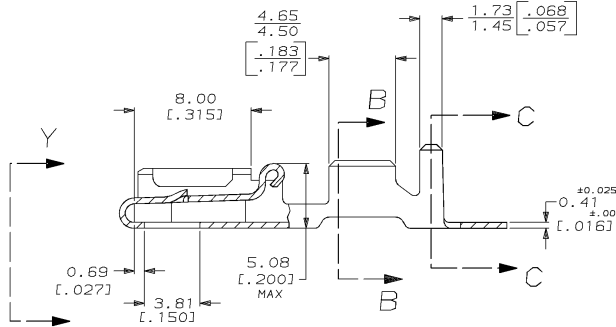
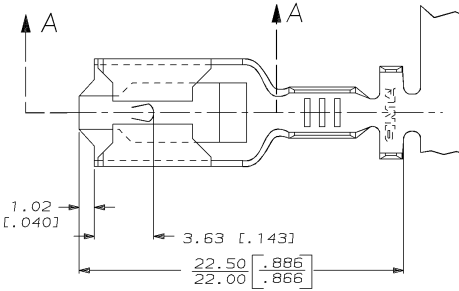
DRAWING MADE IN THIRD ANGLE PROJECTION
 THIS DRAWING IS UNPUBLISHED. RELEASED FOR PUBLICATION
 © COPYRIGHT 19 BY AMP INCORPORATED. ALL INTERNATIONAL RIGHTS RESERVED.

LOC	DIST	P	F	ZONE	LTR	REVISIONS	DATE	APPR
AF	50				B	REL -1 PER 0710-0059-96	2/19/96	JR/JG

SUGGESTED MATING TAB



- 1 - MATL: 1/2H BRASS OR NICKEL PL STEEL.
 - 2 - NO BURRS PERMISSIBLE AT HOLE.
 - 3 - MUST BE FLAT WITHIN 0.076 [.003] OVER THIS LENGTH.
 - 4 - TIN PLATING IS REQUIRED ON BRASS WHEN TERMINAL TEMP. IS OVER 225°F.
 - 5 - HOLE MUST BE SYMMETRICAL ABOUT TAB Q WITHIN 0.076 [.003]
- * TO BE USED ONLY WHEN SHOULDER IS ELIMINATED.



3.43-4.95 DIA [.135-.195] DIA		0.7-2.0mm ² [#18-#14] AWG		0.81 [.032]	63812-1
INSULATION RANGE		WIRE SIZE		MATING TAB THK ±0.025 [.001]	PART NO
F	OR	5.33 [.210]	5.84 [.230]	F	2.79 [.110]
DO NOT SCALE PRINT. UNLESS SPECIFIED DIMENSIONS IN mm [INCHES] TOLERANCES ON:		DR 10/14/94 JR RUTH		AMP AMP Incorporated Harrisburg, PA 17105-3608	
1.65 (.065) [#16]		1.47 (.058) [#18]		NAME	
±0.05 [.002] HEIGHT		WIRE		RECEPTACLE, POSITIVE-LOCK, MK I, 6.35 [.250] SERIES	
MATERIAL		H06 BRASS		DRAWING NO	
FINISH		TIN 0.002498 [.000098] MIN		CAGE CODE	
APPLICATION SPEC		-		00779	
WEIGHT		-		SCALE	
				5:1	
				SHEET	
				1 OF 1	

THIS DRAWING IS A CONTROLLED DOCUMENT FOR AMP INCORPORATED. IT IS SUBJECT TO CHANGE AND THE CONTROLLING ENGINEERING ORGANIZATION SHOULD BE CONTACTED FOR THE LATEST REVISION.