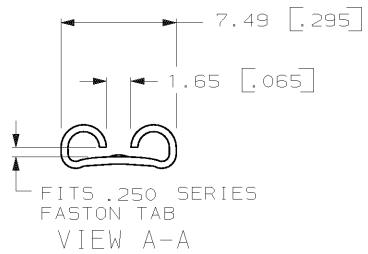
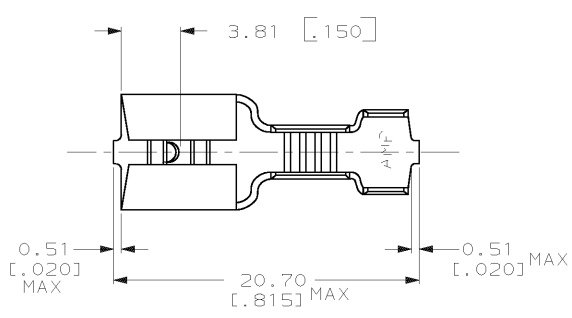


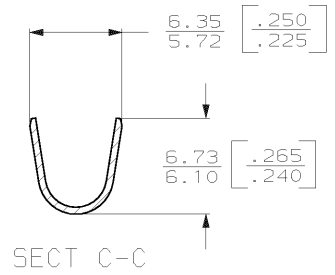
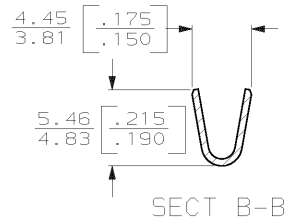
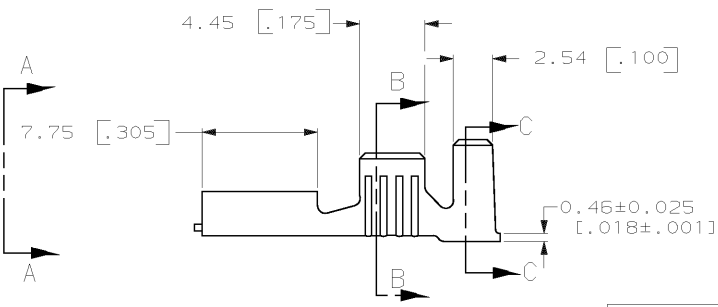
DRAWING MADE IN THIRD ANGLE PROJECTION

THIS DRAWING IS UNPUBLISHED. RELEASED FOR PUBLICATION, 19  
 © COPYRIGHT 19 BY AMP INCORPORATED. ALL INTERNATIONAL RIGHTS RESERVED.

LOC	DIST	ZONE	LTR	REVISIONS	DATE	APPD
AF	50			REV PER 063A-0240-02	29APR02	JR/PD



- 1 SUPPLIED IN LOOSE PIECE
- 2 WIRE SIZE IS 2.0-5.0mm<sup>2</sup> [14-10] AWG.
- 3 INSULATION RANGE IS 3.81-5.08 [.150-.200] DIA.
- △ PRELIMINARY - NOT FOR PRODUCTION



41450-2	0.002032 [.000080] MIN TIN	T4 PHOS BRONZE	0.813 [.032]	△ 61227-2
41450	0.002032 [.000080] MIN TIN	4M BRASS	0.813 [.032]	61227-1
STRIP FORM	FINISH	MATERIAL	MATING TAB THK #0.025 ±[.001]	PART NO

DO NOT SCALE PRINT. UNLESS SPECIFIED DIMENSIONS IN mm [INCHES] TOLERANCES ON:	DR 3/2/93
1. PLC DEC ±	JR RUTH
2. PLC DEC ±	CHK 3/2/93
3. PLC DEC ± 0.25 (.010)	MS FEHER
ANGLES # -	APPD 3/2/93
MATERIAL SEE TABLE	C HEVERS
	APPD 3/2/93
	R/BEINER
FINISH SEE TABLE	PRODUCT SPEC -
	APPLICATION SPEC -
	WEIGHT -

<b>AMP</b> AMP INCORPORATED Harrisburg, Pa. 17105		
NAME <b>RECEPTACLE, FASTON, .250 SERIES</b>		
SIZE <b>B</b>	CAGE CODE <b>00779</b>	DRAWING NO <b>61227</b>
SCALE <b>4:1</b>	SHEET <b>1 OF 1</b>	

AMP 1470-15 REV 6-89  
 03 MAR 1993 06:02:51 AMP13469 40512BA-REPT2121-DWG2121-ULFASTON-FRKHU\_250-STR

CUSTOMER DRAWING