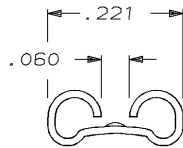
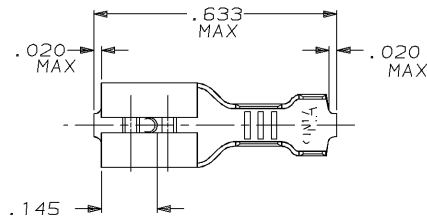


DRAWING MADE IN THIRD ANGLE PROJECTION

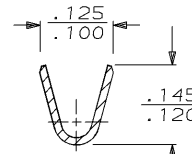
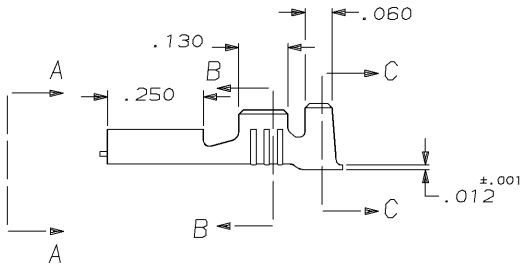
THIS DRAWING IS UNPUBLISHED. RELEASED FOR PUBLICATION, 19 .
 © COPYRIGHT 19 BY AMP INCORPORATED. ALL INTERNATIONAL RIGHTS RESERVED.

LOC	DIST	REVISIONS				
P	F	ZONE	LTR	DESCRIPTION	DATE	APPD
AF	50		F	ADDED -1 PER 0L10-0236-96	12/13/96	JR/PD

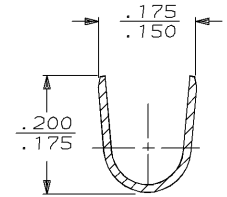


VIEW A-A

1 SUPPLIED IN LOOSE PIECE



SECTION B-B



SECTION C-C

42452-2	.000080 MIN TIN	.090-.130 DIA	20-16 AWG	.020	42566-2
42452-1	-	.090-.130 DIA	20-16 AWG	.020	42566-1
STRIP FORM	FINISH	INSUL RANGE	WIRE SIZE	MATING TAB THK ±.001	PART NO
DO NOT SCALE PRINT. UNLESS SPECIFIED DIMENSIONS ARE IN INCHES TOLERANCES ON: 2 PLC DEC ± .010 ANGLES ± - MATERIAL H04 BRASS FINISH SEE TABLE			DR 3/5/93 JR RUTH CHK 3/5/93 MS FEHER APPD 3/5/93 C MEYERS APPD 3/5/93 R REIMER PRODUCT SPEC - APPLICATION SPEC - WEIGHT -	AMP AMP Incorporated Harrisburg, PA 17105-3608 NAME RECEPTACLE, FASTON, .187 SERIES SIZE B CAGE CODE 00779 DRAWING NO C=42566 SCALE 4:1 SHEET 1 OF 1	

THIS DRAWING IS A CONTROLLED DOCUMENT FOR AMP INCORPORATED. IT IS SUBJECT TO CHANGE AND THE CONTROLLING ENGINEERING ORGANIZATION SHOULD BE CONTACTED FOR THE LATEST REVISION.

AMP 1470-15 REV 3-92

13-DEC-96 08:53:27 amp13469 /ws/dept2121/dwg2121/u.faston-prem/u.187-str

CUSTOMER DRAWING