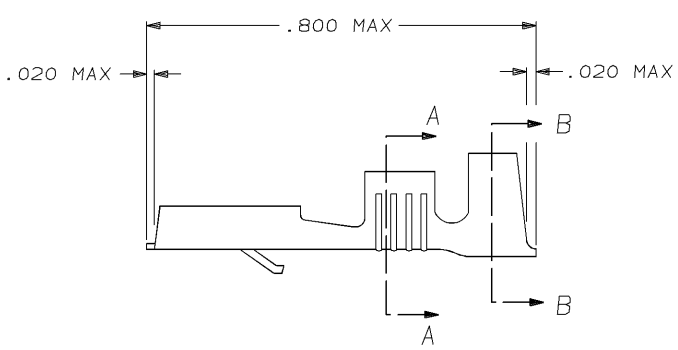


DRAWING MADE IN THIRD ANGLE PROJECTION

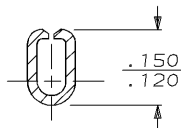
THIS DRAWING IS UNPUBLISHED. RELEASED FOR PUBLICATION

© COPYRIGHT 19 BY AMP INCORPORATED, HARRISBURG, PA. ALL INTERNATIONAL RIGHTS RESERVED. AMP PRODUCTS MAY BE COVERED BY U.S. AND FOREIGN PATENTS AND/OR PATENTS PENDING.

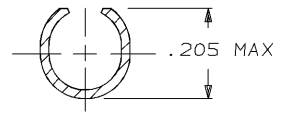
LOC	DIST	REVISIONS						
AF	50	P	F	ZONE	LTR	DESCRIPTION	DATE	APPROVED
					A	OBS -3 PER 0L10-0209-96	12/13/86	JR/JG



1 - SUPPLIED IN LOOSE PIECE.



SECTION A-A



SECTION B-B

OBSOLETE	42100-3	SILVER	BRASS	.120-.160	18-14	.032 ±.001	42238-3
	42100-2	TIN	BRASS	.120-.160	18-14	.032 ±.001	42238-2
	42100-1		BRASS	.120-.160	18-14	.032 ±.001	42238-1
MAKE FROM	FINISH	MATERIAL	INSULATION RANGE	WIRE SIZE	TAB THK	PART NO	

UNLESS OTHERWISE SPECIFIED DIMENSIONS ARE IN INCHES		DR 11/6/86	<b>AMP</b> AMP INCORPORATED Harrisburg, Pa. 17105		
TOLERANCES ON:		JR RUTH			
2 PL DEC ±		CHK 11/6/86	NAME .250 SERIES FASTIN - FASTON RECEPTACLE		
3 PL DEC ± .015		S VETER			
ANGLES ±		APPD 11/6/86	SIZE <b>B</b>	FSCM NO 00779	DRAWING NO 42238
MATERIAL .012 THK		J GILLESPIE	SCALE NTS	SHEET 1 OF 1	
FINISH SEE ABOVE		APPD 11/6/86			
		P KUZO			
		PRODUCT SPEC			
		APPLICATION SPEC			
		WEIGHT			

AMP 1470-15 REV 10-84

13-DEC-96 07:15:55 amp13469 /usr/dsp12121/dsp12121/Au\_Fastin-ov/u.250-str

CUSTOMER DRAWING