

4

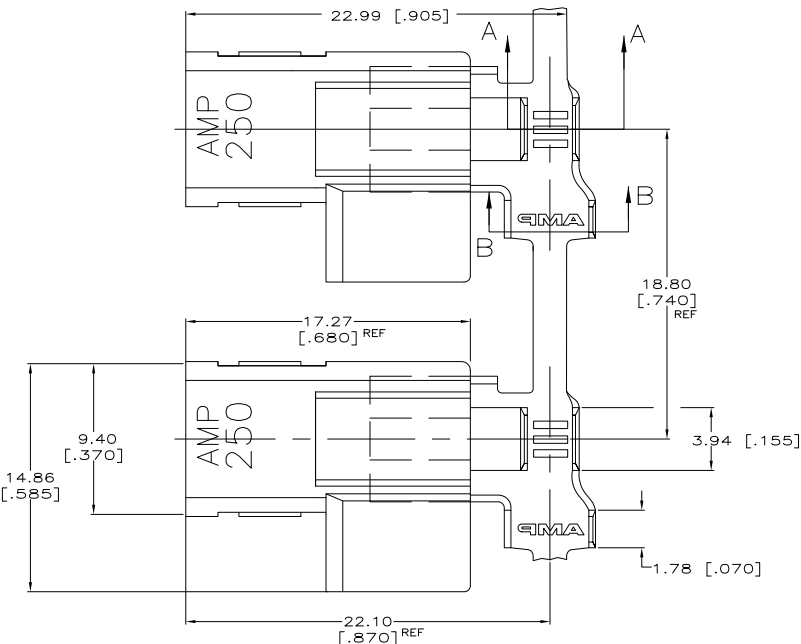
3

2

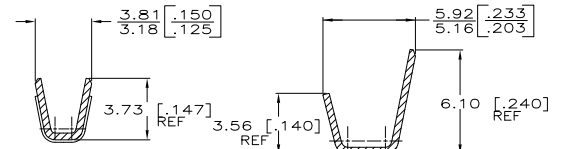
1

THIS DRAWING IS UNPUBLISHED. RELEASED FOR PUBLICATION
 © COPYRIGHT - By - ALL RIGHTS RESERVED.

| LOC | | DIBT | | REVISIONS | | |
|-----|----|---------|----|-----------|-----|---------------------------|
| P | LR | DATE | BY | APD | REV | DESCRIPTION |
| AF | 50 | | | | | |
| | W2 | 11MAR11 | RK | HMR | | REVISED PER ECO-11-005027 |

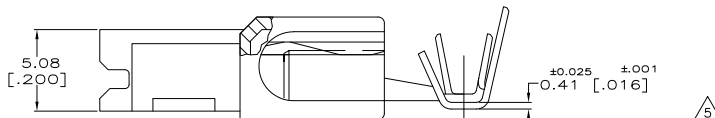


- USE FLAG FASTON TERMINAL BASE P/N 63559, IN THIS PRODUCT.
- WIRE SIZE IS #18-#14 AWG
- INSULATION RANGE IS 2.79-4.06 DIA [.110-.160] DIA.
- FITS .250 X .032 THK FASTON TAB
- △ ALTERNATIVE HOUSING FORM



SECTION A-A

SECTION B-B



| OBS | BULK | 6/6 NYLON / NATURAL | TIN PLATE - 4M HARD BRASS | 5-520971-2 |
|--|--------------------------|----------------------------|--|------------------|
| STANDARD | | 6/6 NYLON / BLACK | TIN PLATE - 4M HARD BRASS | 520971-4 |
| | | 6/6 NYLON / NATURAL | TIN PLATE - H03 HARD PHOS BRZ | 520971-3 |
| | | 6/6 NYLON / NATURAL | TIN PLATE - 4M HARD BRASS | 520971-2 |
| | | 6/6 NYLON / NATURAL | PLAIN - 4M HARD BRASS | 520971-1 |
| PACKAGING | HOUSING MATERIAL / COLOR | TERMINAL FINISH - MATERIAL | PART NO. | |
| THIS DRAWING IS A CONTROLLED DOCUMENT. | | JR. RUTH 1/9/90 | TE Connectivity | |
| DIMENSIONS: | | MS. FEHER 1/9/90 | ASSEMBLY, RECEPTACLE, FLAG, ULTRA-POD, 6.35 [250] SERIES | |
| INCHES | | D. BRATINA 1/9/90 | RESTRICTED TO | |
| OTHER DIMENSIONS: | | PRODUCT SPEC 108-1285 | SIZE CASE CODE DRAWING NO | |
| 0 PLC ± - | | APPLICATION SPEC 114-2124 | A2 00779 C-520971 | |
| 1 PLC ± - | | RIGHT - | SCALE 6:1 SHEET 1 of 1 REV W2 | |
| 2 PLC ± 0.25 [010] | | | | |
| 3 PLC ± - | | | | |
| 4 PLC ± - | | | | |
| ANGLES ± - | | | | |
| MATERIAL SEE TABLE | | FINISH SEE TABLE | | CUSTOMER DRAWING |

1471-9 (3/11)

520971

A