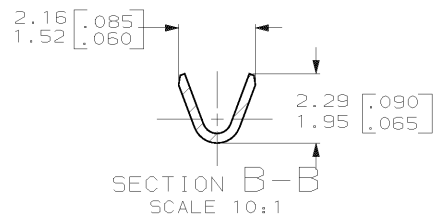
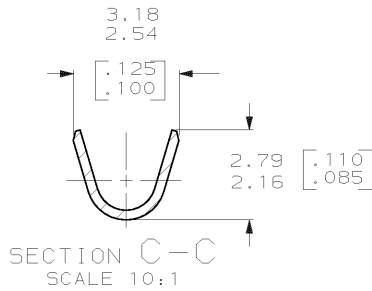
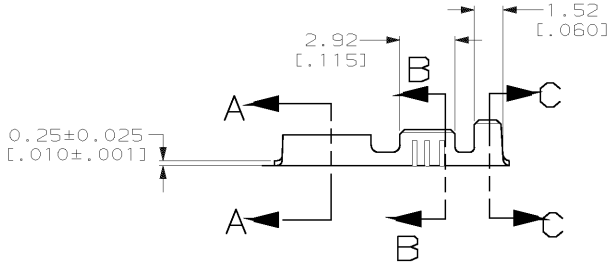
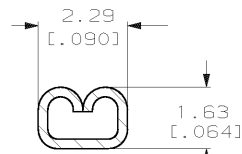
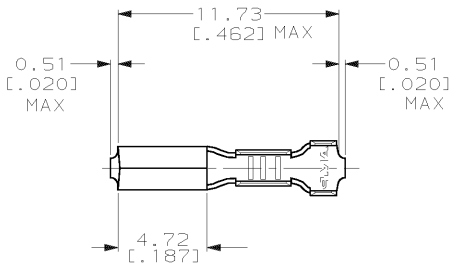


DRAWING MADE IN THIRD ANGLE PROJECTION

THIS DRAWING IS UNPUBLISHED. RELEASED FOR PUBLICATION, 19 .
 © COPYRIGHT 19 BY AMP INCORPORATED. ALL INTERNATIONAL RIGHTS RESERVED.

LOC	DIST	P	F	ZONE	LTR	REVISIONS	DATE	APPD
AF	50				A	REDRAWN PER 0L10-0339-97	8/12/97	JR/JG



- SUPPLIED IN LOOSE PIECE.
- MATING TAB SIZE IS 0.79±0.025 BY 1.57 [.031±.001 BY .062].
- WIRE SIZE IS [#24-#20] AWG.
- INSULATION RANGE IS 1.02-2.03 [.040-.080] DIA.

60900-1	61454-1
SRTIP NO.	PART NO

DO NOT SCALE PRINT. UNLESS SPECIFIED DIMENSIONS IN mm [INCHES] TOLERANCES ON: 2. PLC DEC ± 0.25 [.010] 3. PLC DEC ± - ANGLES # -	DR 8/12/97	AMP AMP Incorporated Harrisburg, PA 17105-3608	NAME	
	CHK 8/12/97		RECEPTACLE, TAB, WRAP TYPE	
MATERIAL	APPD 8/12/97	SIZE B CAGE CODE 00779 DRAWING NO C=61454	DRAWING NO	
	APPD 8/12/97		61454	
FINISH	PRODUCT SPEC	SCALE 5:1	SHEET 1 OF 1	
0.002032 [.000080]	APPLICATION SPEC			
MIN TIN	WEIGHT -			

THIS DRAWING IS A CONTROLLED DOCUMENT FOR AMP INCORPORATED. IT IS SUBJECT TO CHANGE AND THE CONTROLLING ENGINEERING ORGANIZATION SHOULD BE CONTACTED FOR THE LATEST REVISION.