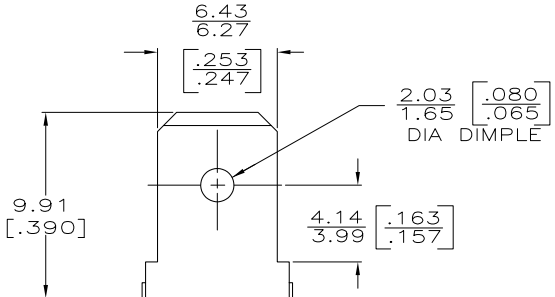
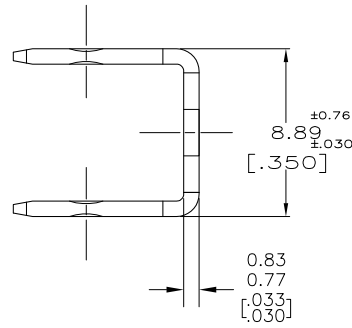
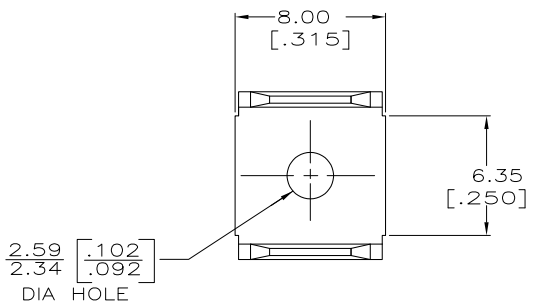


THIS DRAWING IS UNPUBLISHED. RELEASED FOR PUBLICATION
 © COPYRIGHT BY TYCO ELECTRONICS CORPORATION. ALL RIGHTS RESERVED.

LOC	DIST	REVISIONS			
P	LTR	DESCRIPTION	DATE	DWN	APVD
AF	50				
		AH2	REVISED PER ECR-09-007578	07APR09	HMR PD
		AH3	REVISED PER ECO-09-021826	21AUG09	KK AEG



- 1 SUPPLIED IN LOOSE PIECE
- 2 PRELIMINARY - NOT FOR PRODUCTION
- 3 OBSOLETE PARTS: OBSOLETE CIS STREAMLINING PER D.RENAUD/D.SINISI

TIN OVER COPPER	2	60080-3
TIN		60080-2
OBSOLETE		60080-1
FINISH		PART NO

THIS DRAWING IS A CONTROLLED DOCUMENT.		DWN	JR RUTH	12/2/91	Tyco Electronics Corporation Harrisburg, PA 17105-3608
DIMENSIONS: mm [INCHES]		CHK	MS FEHER	12/2/91	
TOLERANCES UNLESS OTHERWISE SPECIFIED:		APVD	MEYERS	12/2/91	NAME
0 PLC	± -	PRODUCT SPEC	TAB, FASTON, 6.35 [.250] SERIES		
1 PLC	± -	APPLICATION SPEC	SIZE		
2 PLC	± -		CAGE CODE		
3 PLC	± 0.38 [.015]		DRAWING NO		
4 PLC	± -		RESTRICTED TO		
ANGLES	± -		A3 00779 C=60080		
MATERIAL	082 BRASS	FINISH	SEE TABLE	WEIGHT	-
CUSTOMER DRAWING				SCALE	5:1
				SHEET	1 of 1
				REV	AH3