

4

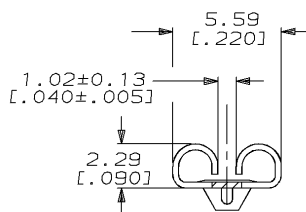
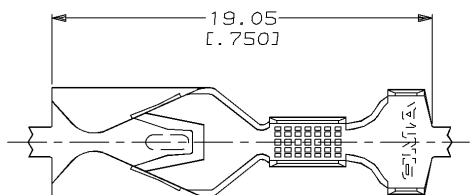
3

2

1

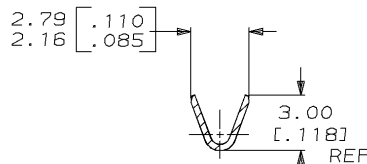
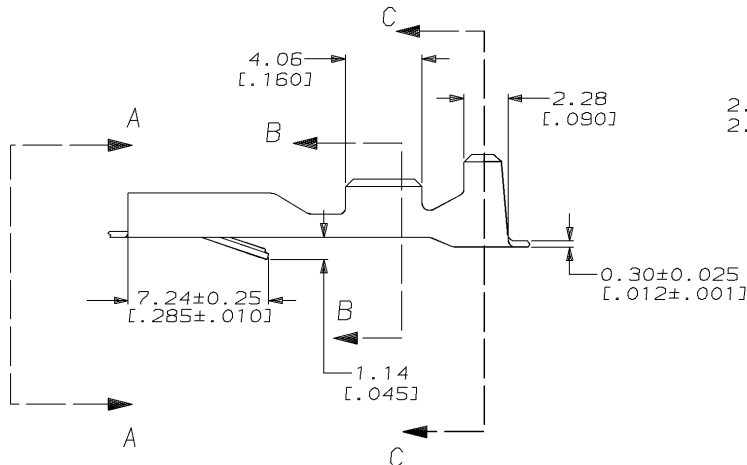
THIS DRAWING IS UNPUBLISHED. RELEASED FOR PUBLICATION
 © COPYRIGHT 19 BY AMP INCORPORATED. ALL RIGHTS RESERVED.

LOC		DIST		REVISIONS			
P	LTR	DESCRIPTION	DATE	DWN	APVD		
G		REDRAWN PER 0L10-0101-97	3/6/97	JR	JG		

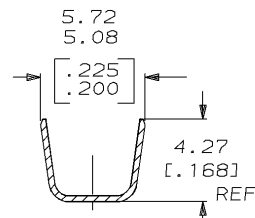


VIEW A-A

- 1 CONTINUOUS STRIP ON REELS.
- 2 TO BE USED WITH 60434 AND HOUSING 480252.
- 3 MAY BE USED WITH INDIVIDUAL 4.75 X 0.51 [0.187 X 0.020] THK TAB.
- 4 WIRE SIZE IS [#20-#16] AWG.
- 5 INSULATION RANGE IS 2.29-3.30 [0.090-0.130] DIA. OR TWO AT 2.79 [0.110] MAX.



SECTION B-B



SECTION C-C

60435-1
 PART NO.

THIS DRAWING IS A CONTROLLED DOCUMENT.		DWN	JR RUTH	3/6/97	AMP Incorporated Harrisburg, PA 17105-3608
DIMENSIONS: MM [INCHES]		CHK	MS FEHER	3/6/97	
TOLERANCES UNLESS OTHERWISE SPECIFIED:		APVD	J GILLESPIE	3/6/97	
0 PLC	±-	NAME		RECEPTACLE, FASTIN-FASTON, 4.75 [0.187] SERIES	
1 PLC	±-	PRODUCT SPEC		-	
2 PLC	±0.38 [0.015]	APPLICATION SPEC		-	
3 PLC	±-	SIZE		A3	00779
4 PLC	±-	CAGE CODE		C-60435	
ANGLES	±-	DRAWING NO		-	
MATERIAL	H04 BRASS	WEIGHT		-	
FINISH	PRE-TIN	CUSTOMER DRAWING		SCALE	5:1
		RESTRICTED TO		SHEET	1 OF 1
				REV	6

AMP 1470-19 REV 27JUN86

06-MAR-97 09:41:02 amp13463 /ws/dep12121/dwg2121/u.fastin-on/u.187-str