

4

3

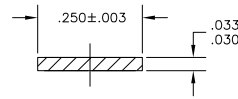
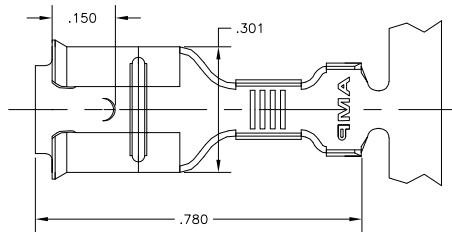
2

1

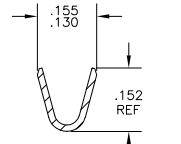
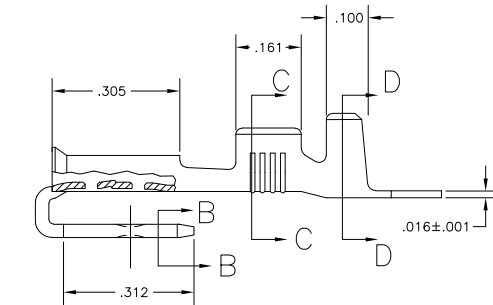
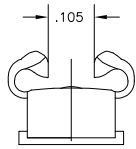
THIS DRAWING IS UNPUBLISHED. RELEASED FOR PUBLICATION
 © COPYRIGHT BY TYCO ELECTRONICS CORPORATION. ALL RIGHTS RESERVED.

| LOC | DIST | REVISIONS | | | |
|-----|------|-----------------------|---------|-----|-----|
| P | LTR | DESCRIPTION | DATE | MIN | APD |
| AF | 50 | REV PER EDR 06-001331 | 21JUL06 | JR | PD |

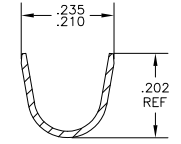
- 1 CONTINUOUS STRIP ON REELS
- 2 MATING TAB THK IS .032±.001.
- 3 WIRE SIZE IS #18-#14 AWG
CRIMP WIDTH IS .110, F TYPE
- 4 INSULATION RANGE IS .120-.170
DIA.
CRIMP WIDTH IS .180, F TYPE



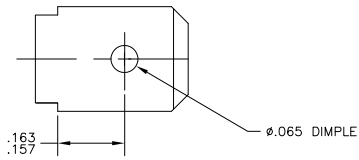
SECTION B-B



SECTION C-C



SECTION D-D



| | |
|---------------------------------|----------|
| H04 PREMILLED BRASS / TIN PLATE | 62109-2 |
| H04 PREMILLED BRASS / PLAIN | 62109-1 |
| MATL. / FINISH | PART NO. |

| | | | | |
|--|--|--|---|--------------------|
| THIS DRAWING IS A CONTROLLED DOCUMENT. | | J.R. RUTH 29JUL02 OK DESANTIS 29JUL02 P DESANTIS 29JUL02 APD DESANTIS 29JUL02 NAME PRODUCT SPEC APPLICATION SPEC 114-2082 WEIGHT CUSTOMER DRAWING | Tyco Electronics Corporation Harrisburg, PA 17105-3608 Tyco Electronics RECEPTACLE, FASTON, PIGGYBACK, 250 SERIES SIZE CASE CODE DRAWING NO A2 00779 C-62109 SCALE 6:1 SHEET 1 of 1 REV G | RESTRICTED TO - |
| DIMENSIONS: INCHES | DIMENSIONS UNLESS OTHERWISE SPECIFIED: 0 PLC ± .005 1 PLC ± .005 2 PLC ± .005 3 PLC ± .015 4 PLC ± .015 ANGLES ± .5° | | | |
| MATERIAL SEE TABLE | FINISH SEE TABLE | | | |

AMP 1471-9 REV 31MM2000

62109

A