

4

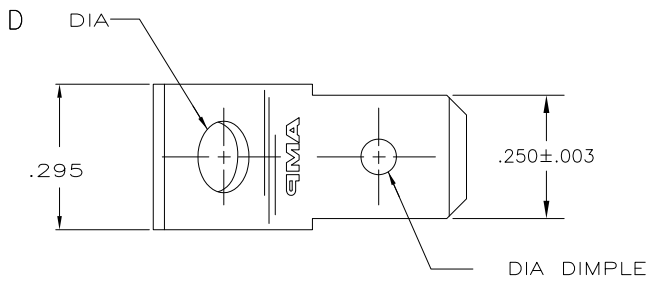
3

2

1

THIS DRAWING IS UNPUBLISHED. RELEASED FOR PUBLICATION
 © COPYRIGHT - By - ALL RIGHTS RESERVED.

LOC	DIST	REVISIONS			
P	LTR	DESCRIPTION	DATE	DWN	APVD
R1		REVISED PER ECO-11-004820	11MAR11	RK	HMR



- 1 SUPPLIED IN LOOSE PIECE FORM.
- 2 FOREIGN PRODUCTION ONLY.
- 3 TIN PLATE
- 4 .000150 MIN SILVER PLATE
- 5 .000015 MIN GOLD OVER .000050 MIN NICKEL
- 6 .000030 MIN GOLD OVER .000050 MIN NICKEL
- 7 PRELIMINARY - NOT FOR PRODUCTION

	1/2 HARD STAINLESS STEEL	-	.145 ±.005	42822-8
	082 BRASS	6	.145 ±.005	42822-7
	082 BRASS	5	.145 ±.005	42822-6
OBSOLETE	082 BRASS		.145 ±.005	42822-5
	082 BRASS	3	.145 ±.005	42822-4
OBSOLETE	082 BRASS	4	.130 ±.005	42822-3
	082 BRASS	3	.130 ±.005	42822-2
OBSOLETE	082 BRASS		.130 ±.005	42822-1
	MATERIAL	FINISH	D DIM	PART NO

THIS DRAWING IS A CONTROLLED DOCUMENT.

DIMENSIONS: INCHES	TOLERANCES UNLESS OTHERWISE SPECIFIED:	DWN: JR RUTH 6/7/91	TE Connectivity	
	0 PLC ± -	CHK: MS FEHER 6/7/91	NAME: TAB, FASTON, .250 SERIES	
	1 PLC ± -	APVD: R BEAVER 6/7/91	SIZE: A3 CAGE CODE: 00779 DRAWING NO: 42822 RESTRICTED TO: -	
	2 PLC ± .015	PRODUCT SPEC: -	WEIGHT: -	
	3 PLC ± -	APPLICATION SPEC: -	CUSTOMER DRAWING	
4 PLC ± -	ANGLES ± -	SCALE: 5:1 SHEET: 1 of 1 REV: R1		
MATERIAL: SEE TABLE	FINISH: SEE TABLE			