

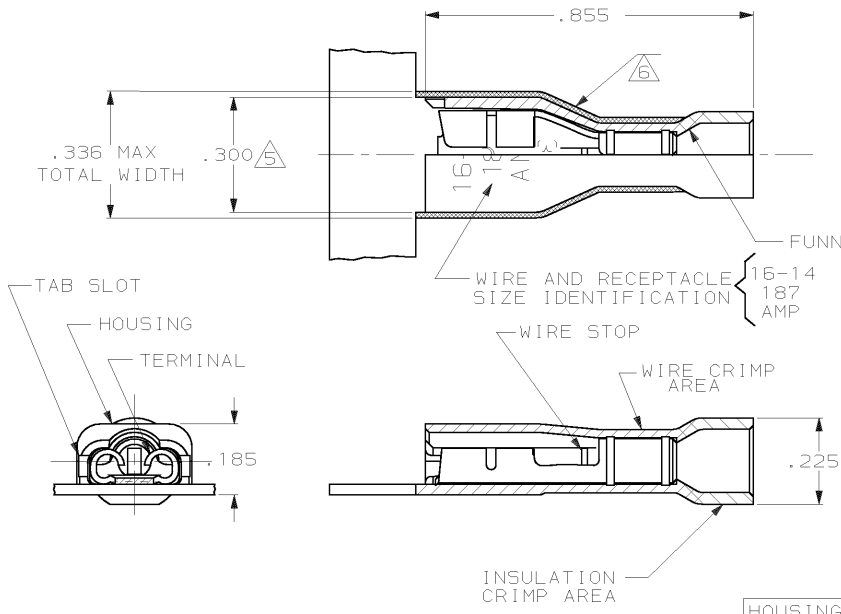
DRAWING MADE IN THIRD ANGLE PROJECTION

THIS DRAWING IS UNPUBLISHED. RELEASED FOR PUBLICATION, 1999

© COPYRIGHT 1999 BY AMP INCORPORATED. ALL INTERNATIONAL RIGHTS RESERVED.

LOC	DIST	ZONE	LTR	REVISIONS	DATE	APPD
AF	50		J	REV PER 061A-0148-99	4 JUN 99	JR/JH

- 1 MATES WITH .032±.001×.187 TAB
 - 2 WIRE STRIP LENGTH .281
 - 3 INSULATION SIZE .090-.160 DIA
 - 4 CONTINUOUS STRIP ON REELS
- △5 DIMENSION DOES NOT INCLUDE TRIM BURR
- △6 .015 MAX CARRIER TRIM BURR PER SIDE IS ALLOWABLE IN THE SHADED AREA



HOUSING: NYLON, COLOR-BLUE TRANSLUCENT		3-520404-2	
RECEPTACLE: #3 HARD BRASS			
TIN PL .000080 MIN THK			
MATERIAL & FINISH		PART NO	
DO NOT SCALE PRINT. UNLESS SPECIFIED DIMENSIONS IN INCHES. TOLERANCES ON: 1. DEC ± .005 2. PLC DEC ± .015 3. PLC DEC ± .015 ANGLES ± -		AMP INCORPORATED Harrisburg, Pa. 17105	
MATERIAL SEE TABLE		NAME RECEPTACLE ASSY, ULTRA-FAST PLUS, .187 SERIES, 16-14 AWG	
FINISH SEE TABLE		SIZE B	
DR 11/2/88 P FORNEY		FSCM NO 00779	
CHK 11/2/88 MS FEHER		DRAWING NO 520404	
APPD 11/2/88 K RANDOLH		SCALE 4:1	
APPD 11/14/88 T SHUTTER		SHEET 1 OF 1	
PRODUCT SPEC 108-2044			
APPLICATION SPEC 114-2123			
WEIGHT -			

AMP 1470-15 REV 3-87
04-JUN-99 08:11:37 amp13469 /home/amp13469/edimmod

CUSTOMER DRAWING