

4

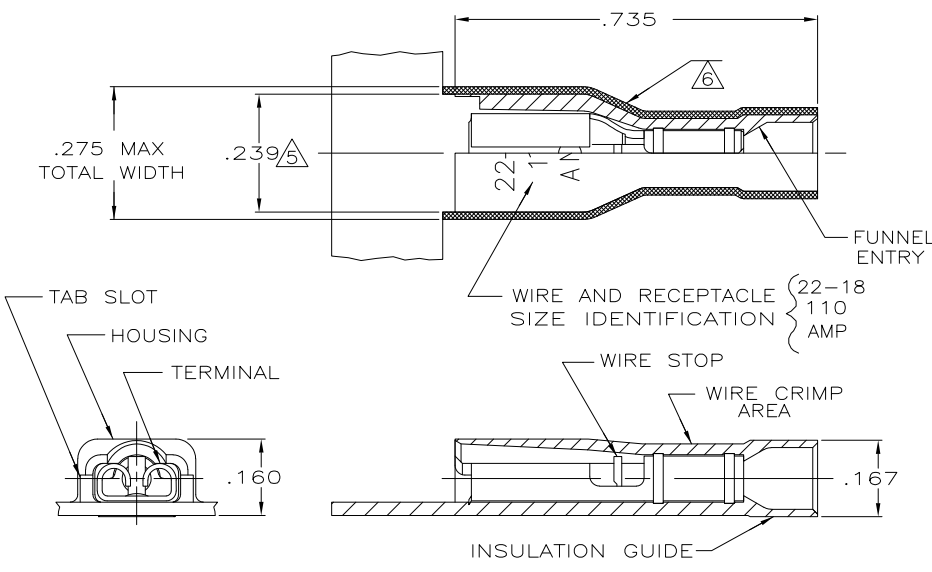
3

2

1

THIS DRAWING IS UNPUBLISHED. RELEASED FOR PUBLICATION
 © COPYRIGHT - By - ALL RIGHTS RESERVED.

LOC	DIST	REVISIONS			
P	LTR	DESCRIPTION	DATE	DWN	APVD
AF	50	G1	REVISED PER ECO-11-005027	11MAR11	RK HMR



- 1 MATES WITH .020 #.001X.110 OR .125 TAB
- 2 WIRE STRIP LENGTH .281
- 3 INSULATION RANGE .060-.120
- 4 CONTINUOUS STRIP ON REELS
- 5 DIMENSION DOES NOT INCLUDE TRIM BURR
- 6 .015 MAX CARRIER TRIM BURR PER SIDE IS ALLOWABLE IN THE SHADED AREA

HOUSING: NYLON, COLOR-RED TRANSLUCENT
 RECEPTACLE: #3 HARD BRASS
 TIN PL .000080 MIN THK

2-520932-2

MATERIAL & FINISH

PART NO

THIS DRAWING IS A CONTROLLED DOCUMENT.		DWN P FORTNEY 6/28/88																				
DIMENSIONS: INCHES		CHK MS FEHER 7/6/88																				
TOLERANCES UNLESS OTHERWISE SPECIFIED:		APVD K RANDOLPH 7/6/88	NAME																			
<table border="1"> <tr><td>0</td><td>PLC</td><td>± -</td></tr> <tr><td>1</td><td>PLC</td><td>± -</td></tr> <tr><td>2</td><td>PLC</td><td>± -</td></tr> <tr><td>3</td><td>PLC</td><td>± .015</td></tr> <tr><td>4</td><td>PLC</td><td>± -</td></tr> <tr><td>ANGLES</td><td></td><td>± -</td></tr> </table>		0	PLC	± -	1	PLC	± -	2	PLC	± -	3	PLC	± .015	4	PLC	± -	ANGLES		± -	PRODUCT SPEC 108-2044 APPLICATION SPEC 114-2123		RESTRICTED TO
0	PLC	± -																				
1	PLC	± -																				
2	PLC	± -																				
3	PLC	± .015																				
4	PLC	± -																				
ANGLES		± -																				
MATERIAL SEE TABLE	FINISH SEE TABLE	WEIGHT -	SIZE A3	CAGE CODE 00779	DRAWING NO C-520932																	
CUSTOMER DRAWING			SCALE 5:1	SHEET 1 OF 1	REV G1																	