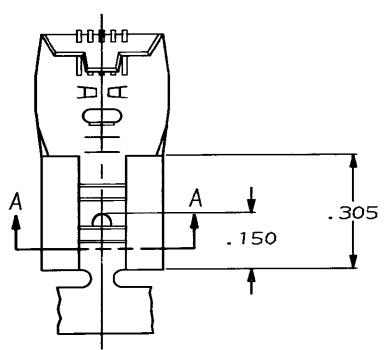


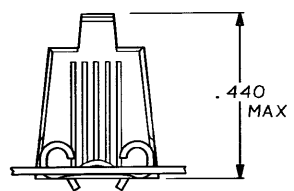
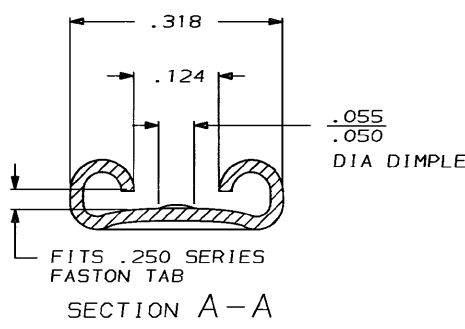
DRAWING MADE IN THIRD ANGLE PROJECTION

THIS DRAWING IS UNPUBLISHED. RELEASED FOR PUBLICATION .19
 © COPYRIGHT 1971 BY AMP INCORPORATED, HARRISBURG, PA. ALL INTERNATIONAL RIGHTS RESERVED. AMP PRODUCTS MAY BE COVERED BY U. S. AND FOREIGN PATENTS AND/OR PATENTS PENDING.

LOC	DIST	P	F	ZONE	LTR	DESCRIPTION	DATE	APPROVED
AF	50				H	REVISED AF-6298	10/19/69	JR/CM



1- CONTINUOUS STRIP ON REELS.



WIRE SIZE	TAB THK	FINISH	MATERIAL	PART NO
12-10	.032 ±.001	TIN	.018 4M BRASS	62022-2
12-10	.032 ±.001	SILVER	.018 PHOS. BRONZE	62022-1

UNLESS OTHERWISE SPECIFIED DIMENSIONS ARE IN INCHES TOLERANCES ON: 2 PL DEC ± 3 PL DEC ± .015 ANGLES ±	DR	JR RUTH	2/3/66	AMP INCORPORATED Harrisburg, Pa. 17105		
	CHK	M FEHER	2/6/66			
MATERIAL SEE TABLE	APPD	C MEYERS	2/7/66	NAME .250 SERIES FLAG FASTON RECEPTACLE		
	APPD	R KUZO	2/7/66			
FINISH SEE TABLE	PRODUCT SPEC			SIZE	FSCM NO	DRAWING NO
	APPLICATION SPEC			B	00779	62022
	WEIGHT			SCALE	NTS	SHEET
						1 OF 1

AMP 1470-15 REV 10-84

19 OCT 1969 08.52.23 R13469 451284-DEP72126-062126-0 FASTON-FR254-250-FL

CUSTOMER DRAWING