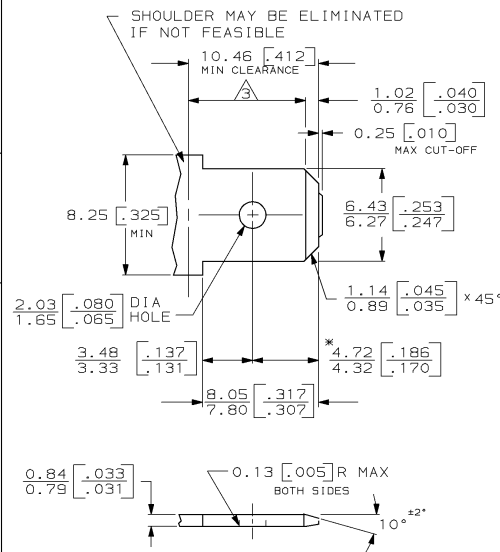


DRAWING MADE IN THIRD ANGLE PROJECTION

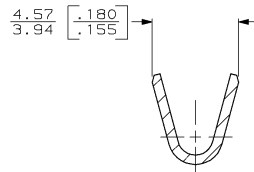
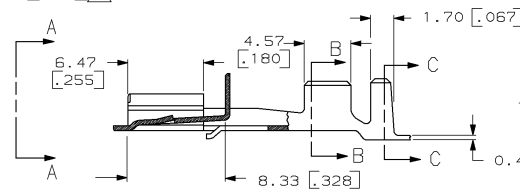
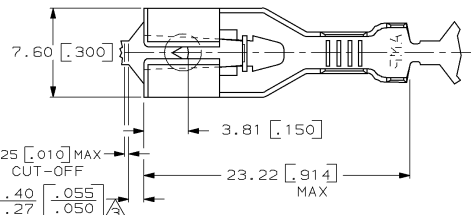
THIS DRAWING IS UNPUBLISHED. RELEASED FOR PUBLICATION .19
 © COPYRIGHT 19 BY AMP INCORPORATED, HARRISBURG, PA. ALL INTERNATIONAL RIGHTS RESERVED. AMP PRODUCTS MAY BE COVERED BY U.S. AND FOREIGN PATENTS AND/OR PATENTS PENDING.

LOC		DIST		REV		ZONE		LTR		REVISIONS		DATE	APPROVED
AF	50	P	F										
										K	REV PER 0G1A-0252-98	8/24/88	JR / JG

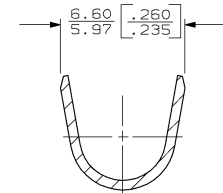
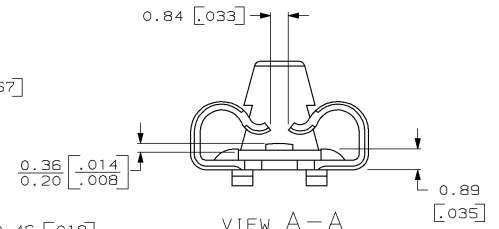
SUGGESTED MATING TAB



- 1 - MATL: 1/2H BRASS OR NICKEL PL STEEL.
 - 2 - NO BURRS PERMISSIBLE AT HOLE.
 - 3 - MUST BE FLAT WITHIN 0.076 [.003] OVER THIS LENGTH.
 - 4 - TIN PLATING IS REQUIRED ON BRASS WHEN TERMINAL TEMP. IS OVER 225°F.
 - 5 - HOLE MUST BE SYMMETRICAL ABOUT TAB Q WITHIN 0.076 [.003]
- * TO BE USED ONLY WHEN SHOULDER IS ELIMINATED.



- 1 DIMENSIONS IN BRACKETS ARE IN INCHES.
 - 2 CONTINUOUS STRIP ON REELS.
- △ THE 1.40 [.055] / 1.27 [.050] DIMENSION MUST BE MAINTAINED BY THE APPLICATOR CUT-OFF TO ENSURE THE PROPER LOCKING FUNCTION OF THE RECEPTACLE.



3.81-5.08 [-.150-.200]	3.0-6.0mm ² [12-10]	63239-1
------------------------	--------------------------------	---------

UNLESS OTHERWISE SPECIFIED DIMENSIONS ARE IN MM		DR 7/28/86	INSULATION RANGE		WIRE SIZE		PART NO	
TOLERANCES ON :		JR RUTH	3.81-5.08 [-.150-.200]		3.0-6.0mm ² [12-10]		63239-1	
2 PL DEC ± -		CHK 1/23/87	AMP AMP INCORPORATED Harrisburg, Pa. 17105					
3 PL DEC ± 0.25 [.010]		G YETTER						
ANGLES ± -		APPD 1/23/87	NAME RECP, POSITIVE LOCK, .250 SERIES					
MATERIAL		J GILLESPIE						
#4H BRASS		APPD 1/23/87	SIZE		FSCM NO	DRAWING NO		
FINISH		R KUZO	C		00779	63239		
TIN		PRODUCT SPEC	SCALE		NTS	SHEET 1 OF 1		
		APPLICATION SPEC						
		114-2074						
		WEIGHT						

METRIC

AMP 1471-7 REV 10-84

CUSTOMER DRAWING

07 FEB 1982 08:56:30 #P1348 4552MCP1711-04013141 R514-120