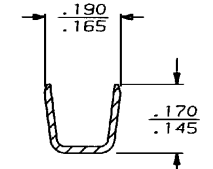
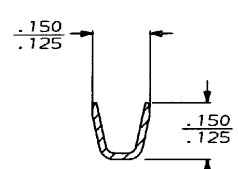
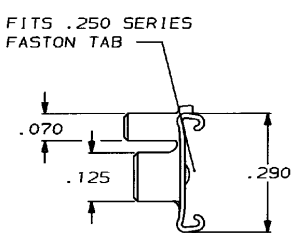
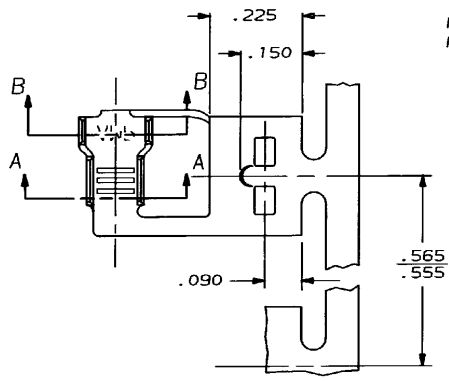


DRAWING MADE IN THIRD ANGLE PROJECTION

THIS DRAWING IS UNPUBLISHED. RELEASED FOR PUBLICATION  
 © COPYRIGHT 19 BY AMP INCORPORATED, HARRISBURG, PA. ALL INTERNATIONAL RIGHTS RESERVED. AMP PRODUCTS MAY BE COVERED BY U.S. AND FOREIGN PATENTS AND/OR PATENTS PENDING.

LOC	DIST	REVISIONS			
AF	50	P	R	ZONE	LTR
					DESCRIPTION
					DATE
					APPROVED
					5 REVISED AF-7659
					10/18/88
					JR/CM



1 - CONTINUOUS STRIP ON REELS.

.090-.140	18-14	.032	TIN	.016 PH BRONZE	60290-3
.090-.140	18-14	.032	TIN	.016 4M BRASS	60290-2
.090-.140	18-14	.032		.016 4M BRASS	60290-1
INSUL RANGE	WIRE SIZE	TAB THK ±.001	FINISH	MATERIAL	PART NO

F	.155	.188	F	.110	.073	14
					.064	16
					.058	18
TYPE	WIDTH	STRIP LENGTH ±.015	TYPE	WIDTH	±.002 HEIGHT	WIRE
INSUL BARREL CRIMP			WIRE BARREL CRIMP			

DR	JR RUTH	10/4/85	AMP INCORPORATED Harrisburg, Pa. 17105
CHK	G YETTER	10/4/85	
APPD	C MEYERS	10/4/85	NAME <b>.250 SERIES FLAG FASTON RECEPTACLE</b>
APPD	R KUZO	10/4/85	
PRODUCT SPEC			SIZE <b>B</b>
APPLICATION SPEC	114-2079		FSCN NO 00779
WEIGHT			DRAWING NO 60290
			SCALE NTS
			SHEET 1 OF 1

AMP 1420-15 REV 10-84  
 18 OCT 1988 02:38:44 #P1040 #6328#85P1040#6328#1420-15 REV 10-84 25-A

CUSTOMER DRAWING