

4

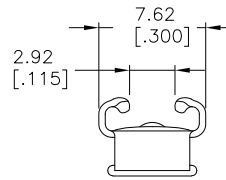
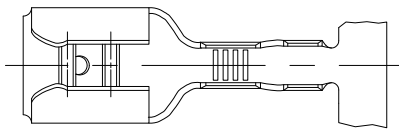
3

2

1

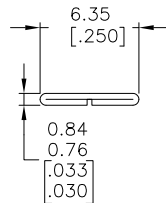
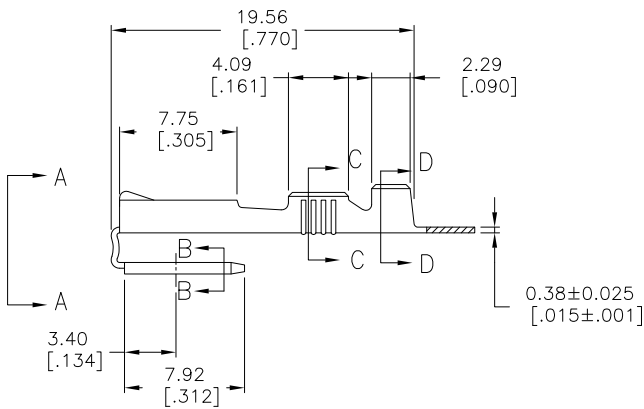
THIS DRAWING IS UNPUBLISHED. RELEASED FOR PUBLICATION
 © COPYRIGHT - By - ALL RIGHTS RESERVED.

LOC	DIST	REVISIONS			
P	LTR	DESCRIPTION	DATE	DWN	APVD
AF	50				
J3		REVISED PER ECO-11-004917	11MAR11	RK	HMR

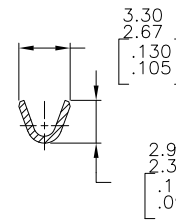


VIEW A-A

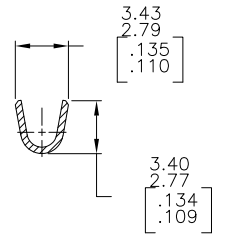
- 1 - CONTINUOUS STRIP ON REELS.
- 2 - STRESS RELIEVED



SECTION B-B



SECTION C-C



SECTION D-D

2	TIN	1.52-2.54	#22-#18 AWG	0.81±0.025	61988-3
	TIN	[.060-.100]		[.032±.001]	61988-2
	-				61988-1
	FINISH	INSUL RANGE	WIRE SIZE	MATING TAB THICKNESS	PART NUMBER

THIS DRAWING IS A CONTROLLED DOCUMENT.

DIMENSIONS: mm [INCHES]	TOLERANCES UNLESS OTHERWISE SPECIFIED:	DWN	JR RUTH	5/14/86	TE Connectivity		
		CHK	MS FEHER	5/14/86			
	0 PLC ± - 1 PLC ± - 2 PLC ± - 3 PLC ± 0.38 [.015] 4 PLC ± - ANGLES ± -	APVD	C NEYERS	5/16/86	RECEPTACLE, FASTON, PIGGYBACK, 6.35 [.250] SERIES		
		PRODUCT SPEC					
MATERIAL	FINISH	APPLICATION SPEC	114-2082	SIZE	CAGE CODE	DRAWING NO	RESTRICTED TO
H04 BRASS	SEE TABLE	WEIGHT		A3	00779	©61988	
CUSTOMER DRAWING			SCALE	4:1	SHEET	1 OF 1	REV
							J3