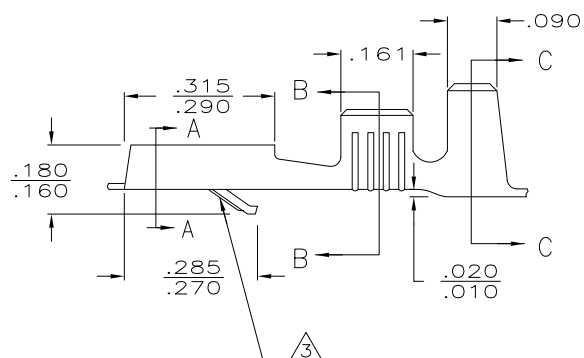




SECTION C-C



	4	TIN	.085—.125	22-18	.032 ±.001	5 60295-4
OBSOLETE	3	TIN	.085—.125	22-18	.032 ±.001	2 1 60295-2
OBSOLETE		NICKEL	.085—.125	22-18	.032 ±.001	60295-3
		TIN	.085—.125	22-18	.032 ±.001	60295-2
		—	.085—.125	22-18	.032 ±.001	60295-1
		FINISH	INSULATION RANGE	WIRE SIZE	TAB THK	PART NO

THIS DRAWING IS A CONTROLLED DOCUMENT.		DWN JR RUTH 4/28/86 CHK G YETTER 4/28/86		 TE Connectivity	
DIMENSIONS: INCHES 		TOLERANCES UNLESS OTHERWISE SPECIFIED: 0 PLC ± - 1 PLC ± - 2 PLC ± - 3 PLC ± .015 4 PLC ± - ANGLES ± -		NAME R KUZO 4/28/86 PRODUCT SPEC — APPLICATION SPEC —	
MATERIAL .012 BRASS SEE ABOVE		WEIGHT —		SIZE A3	
				CAGE CODE 00779	
				DRAWING NO C-60295	
				RESTRICTED TO —	
CUSTOMER DRAWING				SCALE 1:1 SHEET 1 of 1 REV AH	