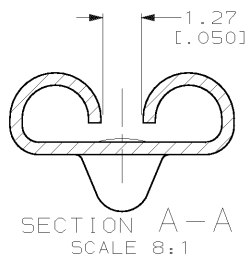
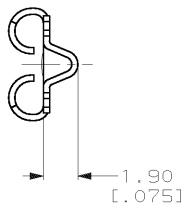
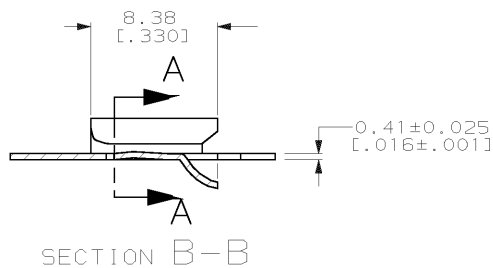
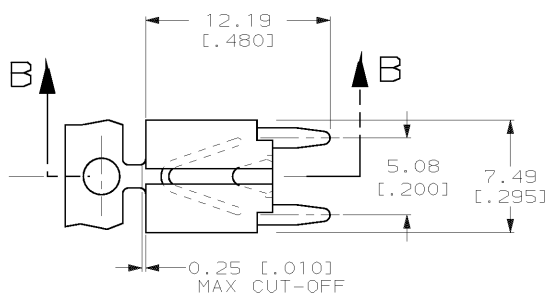


DRAWING MADE IN THIRD ANGLE PROJECTION

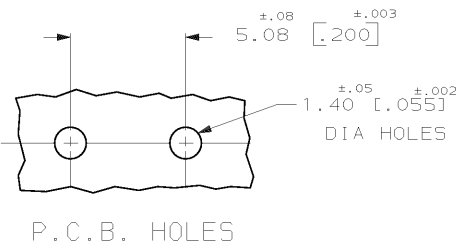
THIS DRAWING IS UNPUBLISHED. RELEASED FOR PUBLICATION, 19 .

© COPYRIGHT 19 BY AMP INCORPORATED. ALL INTERNATIONAL RIGHTS RESERVED.

LOC	DIST	P	F	ZONE	LTR	DESCRIPTION	DATE	APPD
AF	50					REV PER 061A-0131-98	5/13/98	JR/JW



- 1 CONTINUOUS STRIP ON REELS.
- 2 0.00254 [.000100] MIN THK TIN OVER 0.00127 [.000050] MIN NICKEL.
- 3 MATING TAB THK IS 0.81±0.025 [.032±.001].



63968-1
PART NO

DO NOT SCALE PRINT. UNLESS SPECIFIED DIMENSIONS IN mm [INCHES] TOLERANCES ON: 1. PLC DEC ± 0.25 [.010] 2. PLC DEC ± - ANGLES ± -		DR 2/18/97 JR RUTH CHK 2/18/97 MS FEHER APPD 2/18/97 P DESANTIS APPD 2/18/97 V KARABCJEVSOHY	AMP AMP Incorporated Harrisburg, PA 17105-3608	
MATERIAL H04 BRASS		PRODUCT SPEC -	NAME RECEPTACLE, L.I.F. FASTON™ 6.35/5.21 [.250/.205] SERIES, PC BOARD MOUNTED	
FINISH TIN OVER NICKEL		APPLICATION SPEC -	SIZE B	CAGE CODE 00779
THIS DRAWING IS A CONTROLLED DOCUMENT FOR AMP INCORPORATED. IT IS SUBJECT TO CHANGE AND THE CONTROLLING ENGINEERING ORGANIZATION SHOULD BE CONTACTED FOR THE LATEST REVISION.		WEIGHT -	DRAWING NO C=63968	SHEET 1 OF 1
SCALE 4:1			SHEET 1 OF 1	