

4

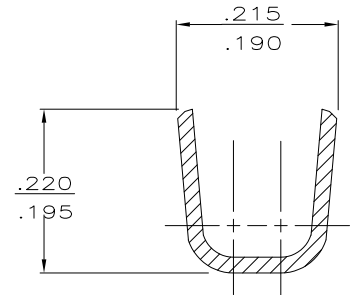
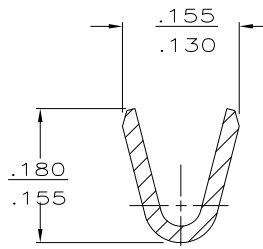
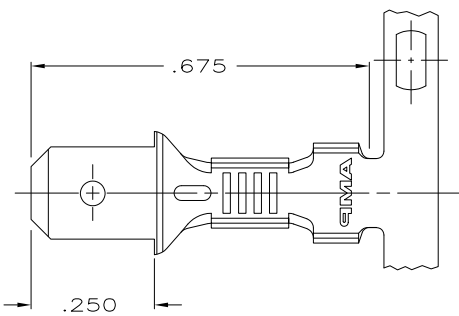
3

2

1

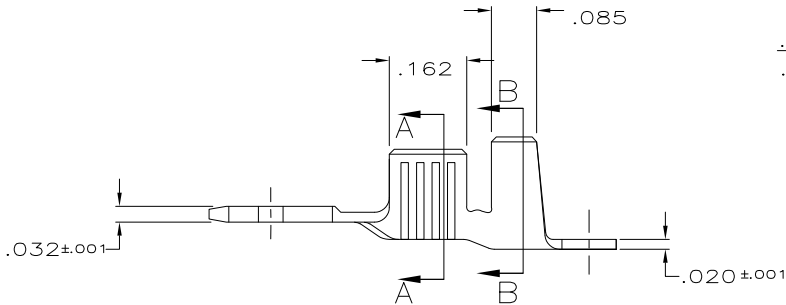
THIS DRAWING IS UNPUBLISHED. RELEASED FOR PUBLICATION
 © COPYRIGHT - By - ALL RIGHTS RESERVED.

LOC		DIST		REVISIONS			
P	LTR	DESCRIPTION		DATE	DWN	APVD	
AF	50	K1	REVISED PER ECO-11-004917	11MAR11	RK	HMR	



SECTION A-A

SECTION B-B



OBSOLETE	TIN	18-14	.120-.150	61687-2
	FINISH	WIRE SIZE	INSUL. RANGE	PART NO

THIS DRAWING IS A CONTROLLED DOCUMENT.		DWN	DK SCHRUM	2-27-89	 TE Connectivity TAB, FASTON™ .187 SERIES
DIMENSIONS: INCHES		CHK	JR RUTH	2-27-89	
TOLERANCES UNLESS OTHERWISE SPECIFIED:		APVD	C MEYERS	2-27-89	
0 PLC ± - 1 PLC ± - 2 PLC ± - 3 PLC ± .015 4 PLC ± - ANGLES ± -		PRODUCT SPEC	2-27-89	R KUZO	
MATERIAL	#2H PREMILLED BRASS	FINISH	SEE TABLE	WEIGHT	—
SIZE		CAGE CODE	DRAWING NO	RESTRICTED TO	
A3		00779	C-61687	—	
CUSTOMER DRAWING			SCALE	5:1	SHEET 1 OF 1
			REV	K1	