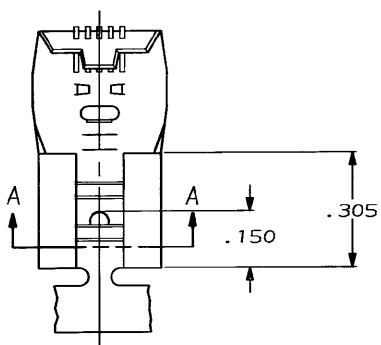
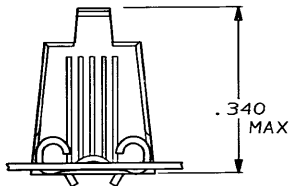
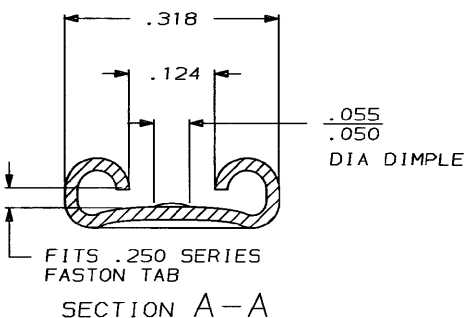


DRAWING MADE IN THIRD ANGLE PROJECTION
 THIS DRAWING IS UNPUBLISHED. RELEASED FOR PUBLICATION
 © COPYRIGHT 1971 BY AMP INCORPORATED, HARRISBURG, PA. ALL INTERNATIONAL RIGHTS RESERVED. AMP PRODUCTS MAY BE COVERED BY U.S. AND FOREIGN PATENTS AND/OR PATENTS PENDING.

LOC	DIST	P	F	ZONE	LTR	REVISIONS	DATE	APPROVED
AF	50				K	REVISED AF-6298	10/18/85	



1- CONTINUOUS STRIP ON REELS.



WIRE SIZE	TAB THK	FINISH	MATERIAL	PART NO
18-12	.032 ±.001	TIN	.018 4M BRASS	62021-3
18-12	.032 ±.001		.018 BRASS	62021-2
18-12	.032 ±.001	SILVER	.018 PHOS. BRONZE	62021-1

UNLESS OTHERWISE SPECIFIED DIMENSIONS ARE IN INCHES TOLERANCES ON: 2 PL DEC ± 3 PL DEC ± .015 ANGLES ±		DR JR RUTH 2/3/86 CHK M FEHER 2/6/86 APPD C MEYERS 2/7/86 APPD R KUZO 2/7/86	AMP INCORPORATED Harrisburg, Pa. 17105	
MATERIAL SEE TABLE	PRODUCT SPEC	NAME .250 SERIES FLAG FASTON RECEPTACLE		
FINISH SEE TABLE	APPLICATION SPEC	SIZE B	FSCM NO 00779	DRAWING NO 62021
WEIGHT		SCALE NTS	SHEET 1 OF 1	