

4

3

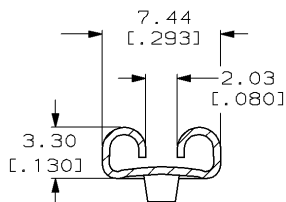
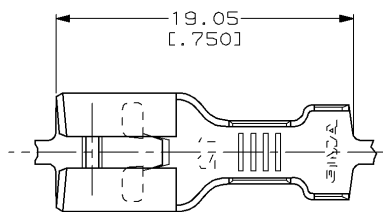
2

1

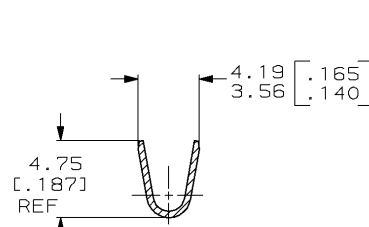
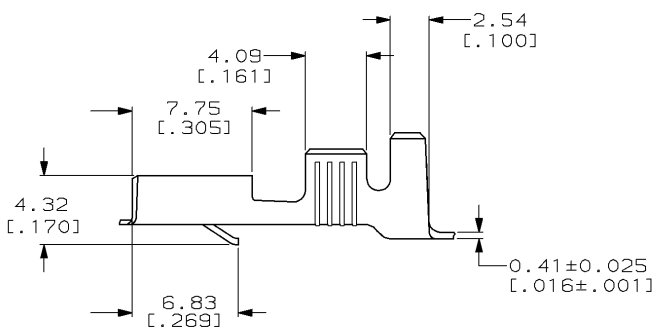
THIS DRAWING IS UNPUBLISHED. RELEASED FOR PUBLICATION
 © COPYRIGHT 19 BY AMP INCORPORATED. ALL RIGHTS RESERVED.

Loc	DIST	REVISIONS			
P	LTR	DESCRIPTION	DATE	DWN	APVD
AF	50	B	REV PER 061A-0318-98	9/29/98	JR JG

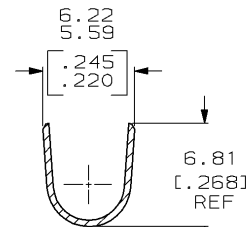
- 1 CONTINUOUS STRIP ON REELS.
- 2 WIRE SIZES [#16-#12] AWG.
- 3 INSULATION DIA IS 3.81-4.83 [.150-.190] DIA.
- 4 MATING TAB THK IS 0.81±0.025 [.032±.001].



SECTION A-A



SECTION B-B



SECTION C-C

62891-1
 PART NO.

THIS DRAWING IS A CONTROLLED DOCUMENT.		DWN	JR RUTH	1/29/98	AMP AMP Incorporated Harrisburg, PA 17105-3608
DIMENSIONS: MM (INCHES)		CHK	P FORTNEY	1/29/98	
TOLERANCES UNLESS OTHERWISE SPECIFIED:		APVD	J GILLESPIE	1/29/98	NAME
0 PLC	±-	PRODUCT SPEC	RECEPTACLE, FASTIN-FASTON, 6.35 [0.250] SERIES		
1 PLC	±-	APPLICATION SPEC	SIZE	CAGE CODE	DRAWING NO
2 PLC	±0.38 (.015)	RESTRICTED TO	A3	00779	62891
3 PLC	±-	RESTRICTED TO	CUSTOMER DRAWING		
4 PLC	±-	RESTRICTED TO	SCALE	SHEET	REV
ANGLES	±-	RESTRICTED TO	4:1	1 OF 1	B
MATERIAL	H04 BRASS	FINISH	0.002032 [.000080] MIN TIN		

AMP 1470-19 REV 11JUN97

05-JAN-98 10:46:13 amp13469 /vs/dep12121/dwg2121/u.fastin-on/u.250-str