

4

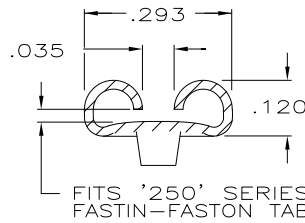
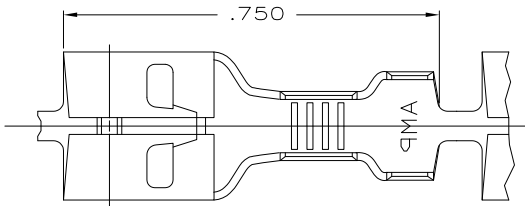
3

2

1

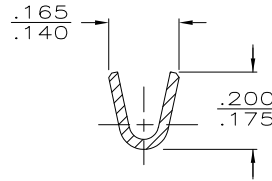
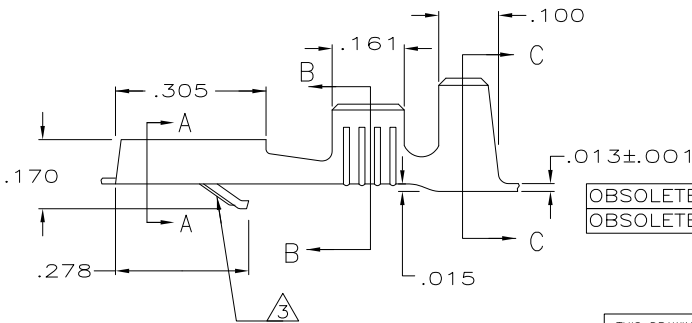
THIS DRAWING IS UNPUBLISHED. RELEASED FOR PUBLICATION
 © COPYRIGHT - By - ALL RIGHTS RESERVED.

LOC	DIST	REVISIONS			
P	LTR	DESCRIPTION	DATE	DWN	APVD
AF	50				
	J1	REVISED PER ECO-11-004917	11MAR11	RK	HMR

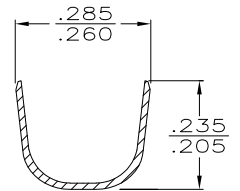


SECTION A-A

- △ FOREIGN PRODUCTION ONLY
- 2 CONTINUOUS STRIP ON REELS
- △ 3 RIB ON 1-60253-2 ONLY.



SECTION B-B



SECTION C-C

OBSOLETE OBSOLETE	16-12	.032	.160-.210 OR (2) .130 MAX	TIN PL .000080 MIN	#4H BRASS	△ 1-60253-2 △ 3
				SILVER .000150 MIN	#4H BRASS	60253-3
				TIN PL .000080 MIN	#4H BRASS	60253-2
				NONE	#4H BRASS	60253-1 △
	WIRE SIZE	TAB THK ±.001	INSUL. RANGE	FINISH	MATERIAL	PART NO

THIS DRAWING IS A CONTROLLED DOCUMENT.		DWN DK SCHRUM 4/10/89				
DIMENSIONS: INCHES		CHK JR RUTH 4/17/89				
TOLERANCES UNLESS OTHERWISE SPECIFIED:		APVD J GILLESPIE 5/19/89	NAME RECEPTACLE, FASTIN-FASTON, .250 SERIES			
0 PLC ± -		PRODUCT SPEC	SIZE CAGE CODE DRAWING NO RESTRICTED TO			
1 PLC ± -		APPLICATION SPEC	A3 00779 C=60253 -			
2 PLC ± -		WEIGHT	CUSTOMER DRAWING SCALE 5:1 SHEET 1 OF 1 REV J1			
3 PLC ± .015						
4 PLC ± -						
ANGLES ± -						
MATERIAL SEE TABLE	FINISH SEE TABLE					