

4

3

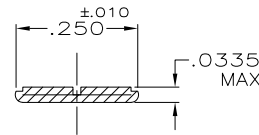
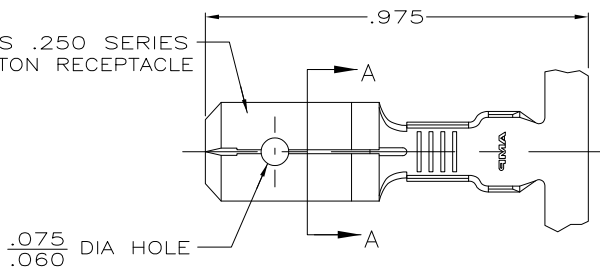
2

1

THIS DRAWING IS UNPUBLISHED. RELEASED FOR PUBLICATION
 © COPYRIGHT - By - ALL RIGHTS RESERVED.

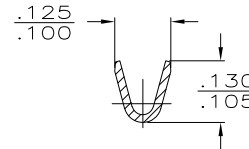
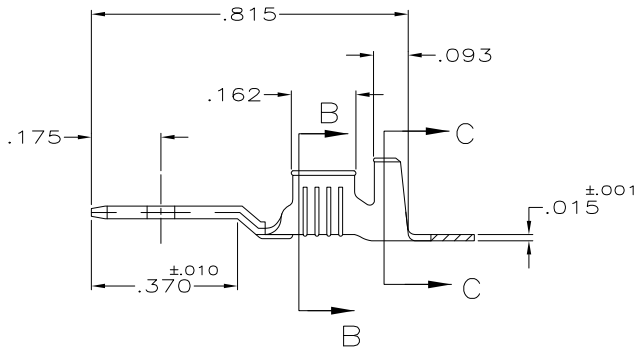
LOC	DIST	REVISIONS				
P	LTR	DESCRIPTION	DATE	DWN	APVD	
AF	50	H1	REVISED PER ECO-11-004820	11MAR11	RK HMR	

FITS .250 SERIES
FASTON RECEPTACLE

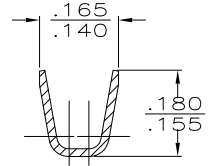


SECTION A-A
SCALE 5:1

1. CONTINUOUS STRIP ON REELS.
2. FEED TO BE .540±.005
3. REVERSED REEL OF 42475-1.
4. REVERSED REEL OF 42475-2.
5. FOREIGN PRODUCTION ONLY.



SECTION B-B
SCALE 5:1



SECTION C-C
SCALE 5:1

FINISH	INSULATION RANGE	WIRE SIZE	PART NO
4 TIN	.080-.120DIA	22-18 AWG	42475-4
3			42475-3
5 TIN			42475-2
5			42475-1

THIS DRAWING IS A CONTROLLED DOCUMENT.		DWN	JR RUTH	1/31/91	TE Connectivity NAME TAB, FASTON, .250 SERIES	RESTRICTED TO	—	
DIMENSIONS:	TOLERANCES UNLESS OTHERWISE SPECIFIED:	CHK	MS FEHER	1/31/91		SIZE	CAGE CODE	DRAWING NO
INCHES		APVD	C MEYERS	1/31/91		A3	00779	C-42475
0 PLC ± -	0 PLC ± -	PRODUCT SPEC	—	APPLICATION SPEC		WEIGHT	—	—
1 PLC ± -	1 PLC ± -	—	—	—	CUSTOMER DRAWING	SCALE	4:1	
2 PLC ± -	2 PLC ± -	—	—	—		SHEET	1 OF 1	
3 PLC ± .015	3 PLC ± .015	—	—	—		REV	H1	
4 PLC ± -	4 PLC ± -	—	—	—				
5 ANGLES ± -	5 ANGLES ± -	—	—	—				
MATERIAL	FINISH							
#2H BRASS	SEE TABLE							